

37th Annual

Nassau Counselors' Association

COLLEGE EXPO

Sunday, September 17, 2017
12:00 noon — 3:00 PM

Clark Athletic Center
SUNY College at Old Westbury
Old Westbury, Long Island
(See map and directions on page 4.)

SEMINARS

- 1:00 pm: Preparing for College Admissions
- 1:30 pm: Financial Aid
- 2:00 pm: NCAA Guidelines for the College Athlete
- 2:00 pm: Students w/ Special Needs

FOR MORE INFORMATION SEE PAGE 5

Students:

Register online at www.gotocollegefairs.com
and print out a barcoded pass that captures your
student data for College Representatives to scan.



Visit www.nassaucounselors.org



BE YOU

@HOFSTRA

Seek, shape and discover your own educational and career journey at Hofstra University. Small classes, tailored programs, and dedicated faculty help you pursue your passion in a dynamic learning environment that encourages collaboration, engagement and interaction. And, Hofstra's close proximity to Manhattan offers a wide range of networking and internship opportunities.

Learn more at one of our Fall Open Houses:

- Sunday, September 24, 2017, 9 a.m. – 2:30 p.m.
- Sunday, October 22, 2017, 9 a.m. – 2:30 p.m.

Register @ hofstra.edu/fallopen or call **516-463-6700**.



HOFSTRA
UNIVERSITY®



WELCOME!

Dear Attendees:

On behalf of the Nassau Counselors' Association, it is my pleasure to welcome you to the 2017 Fall College EXPO. We hope that you will find today's event both informative and enjoyable.

The Fall College EXPO is designed to help assist you in planning for your post-secondary opportunities. The representatives who are here today represent a vast cross-section of colleges, universities, career schools and military organizations throughout the United States. They are eager to meet you, answer all of your questions and provide the information that will guide you throughout the college application process. This is a wonderful opportunity for you and your family to ask questions and receive the most pertinent and current information about the institutions that you are considering. We have also scheduled workshops throughout the day presented by experts in their fields. We hope you take advantage of attending the workshops and have a positive experience at the EXPO.

The Fall EXPO would not be made possible if it were not for our fabulous NCA co-chairs Frank Pizzardi and Dr. Joy-Anne D'Anca and I owe them a huge THANK YOU! As one of our largest events, the Fall EXPO takes an enormous amount of time and dedication to coordinate, and their expertise in organizing this event is truly irreplaceable. Many thanks also go out to the dedicated volunteers who have worked tirelessly to make this day happen, especially our workshop presenters and of course our Fall EXPO committee: Donna Orleman, Bob Germino, Cynthia Rossi, Gloria Schetty-Plante and Gina Christel. We would also like to thank SUNY Old Westbury for contributing to the success of this event by offering their gracious hospitality.

Best of luck as you embark on this exciting journey and we hope that you enjoy your visit to the 2017 NCA Fall College EXPO – we're excited that you're here!

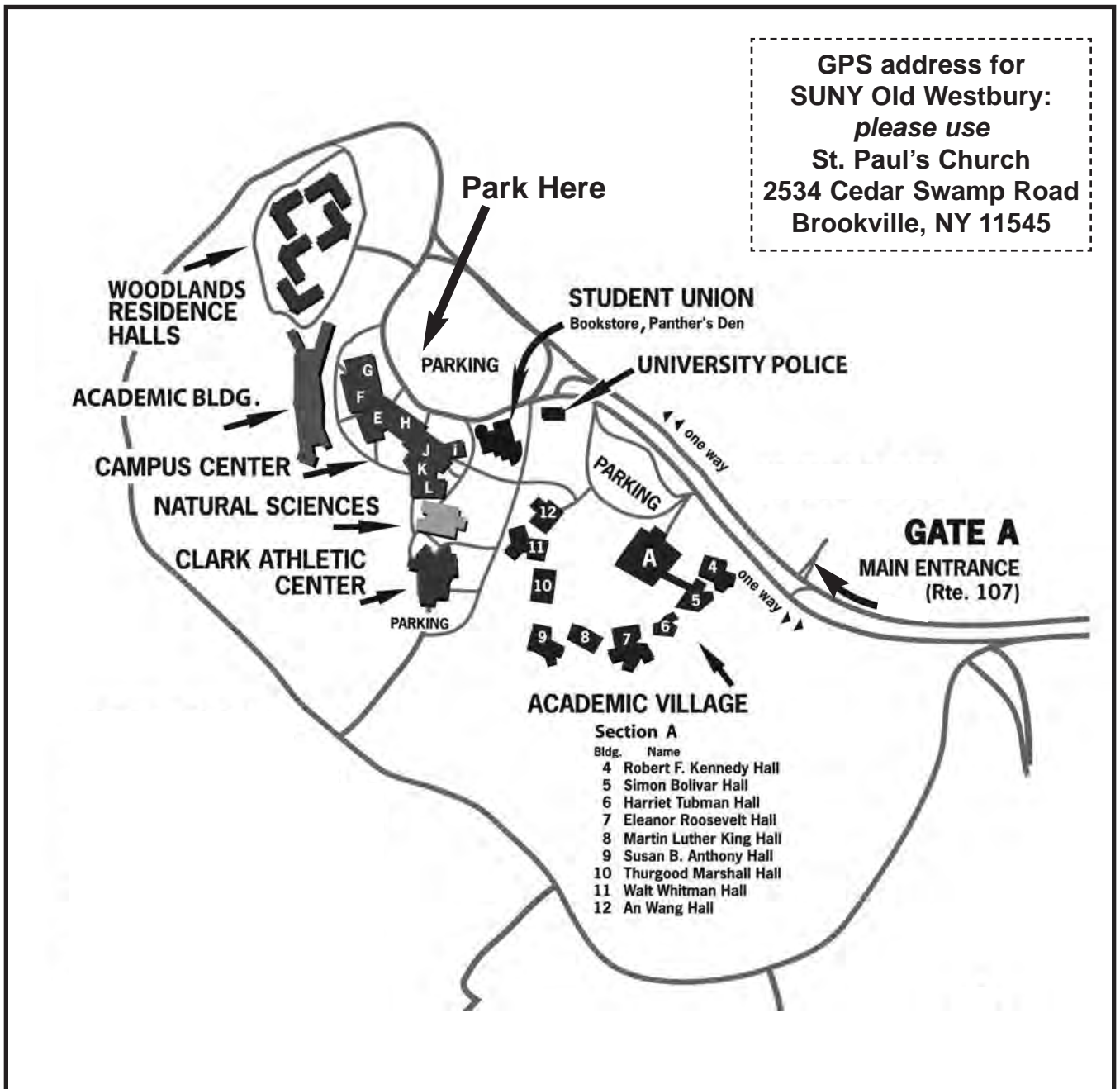
Sincerely,

Sue Moller
President, 2017-2018
Nassau Counselors' Association

Nassau Counselors' Association

FALL COLLEGE EXPO — Sunday, September 17

at SUNY College at Old Westbury — Clark Center Gym



DIRECTIONS: Take the Long Island Expressway to Exit 41 North (41N — Route 107) or take the Northern State Parkway to Exit 35 North (35N — Broadway/Route 107). Follow Route 107 north for one mile to the campus entrance on the left (west side of the road). Follow signs to Clark Athletic Center.

SEMINARS

PREPARING FOR COLLEGE ADMISSIONS

1:00 pm • Room S-103 Natural Sciences Building

Ms. Judy Berhanan

Dean of Admissions

Stony Brook University

FINANCIAL AID

1:30 pm • Room S-100 Natural Sciences Building

Ms. Crystal Krudis

Director of Counseling and Customer Services

Adelphi University

NCAA GUIDELINES FOR THE COLLEGE ATHLETE

2:00 pm • Room S-105 Natural Sciences Building

Dr. Robert Dranoff

Commissioner of the East Coast Conference

STUDENTS WITH SPECIAL NEEDS

2:00 pm • Room S-103 Natural Sciences Building

Mr. Allen Tinkler

*Consultant for Students with Learning Disabilities
and Other Special Needs*

collegeforyou@gmail.com

WHERE
THE
EDUCATION
IS OUTCOMES
DRIVEN.



FALL OPEN HOUSE | NOVEMBER 12 AT 1PM



NAMED A
"BEST VALUE"
2 YEARS IN A ROW*



*From MONEY Magazine, August 2016 © 2016 Time Inc. Used under license. MONEY and TIME Inc. are not affiliated with, and do not endorse products or services of, Molloy College.

WHERE. HERE. | molloy.edu | [#MolloyCollege](https://twitter.com/MolloyCollege) | 1-888-4-MOLLOY



Colleges Attending Fall College EXPO

ARIZONA

Arizona State University, Tempe

CONNECTICUT

Eastern Connecticut State University, Willimantic
Lyme Academy, College of Fine Arts, Old Lyme
Quinnipiac University, Hamden
Sacred Heart University, Fairfield
Southern Connecticut State University, New Haven
University of Bridgeport, Bridgeport
University of Connecticut, Storrs
University of Hartford, West Hartford
Western Connecticut State University, Danbury

DISTRICT OF COLUMBIA

American University, Washington, DC

FLORIDA

Eckerd College, St. Petersburg
Flagler College, St. Augustine
Florida Institute of Technology, Melbourne
Florida Southern College, Lakeland
Lynn University, Boca Raton
Nova Southeastern University, Fort Lauderdale
Saint Leo University, St. Leo
University of Tampa, Tampa

MAINE

Maine Maritime Academy, Castine
Saint Joseph's College of Maine, Standish
University of Maine at Orono, Orono

MARYLAND

Goucher College, Baltimore
Mount Saint Mary's University, Emmitsburg
Stevenson University, Stevenson
Towson University, Towson
University of Maryland, Baltimore County, Baltimore
University of Maryland, College Park, College Park

MASSACHUSETTS

Assumption College, Worcester
Bay Path University, Longmeadow
Becker College, Worcester
Curry College, Milton

Emmanuel College, Boston
Fisher College, Boston
Lasell College, Newton
Lesley University, Cambridge
Newbury College, Brookline
Nichols College, Dudley
Springfield College, Springfield
Stonehill College, Easton
Suffolk University, Boston
University of Massachusetts – Amherst, Amherst
University of Massachusetts – Lowell, Lowell
Western New England College, Springfield

MICHIGAN

Lawrence Technological University, Southfield

NEW HAMPSHIRE

Franklin Pierce University, Rindge
Saint Anselm College, Manchester

NEW JERSEY

College of New Jersey (The), Ewing
Fairleigh Dickinson University, Teaneck
Monmouth University, West Long Branch
New Jersey Institute of Technology, Newark
Rider University, Lawrenceville
Seton Hall University, South Orange

NEW YORK

Adelphi University, Garden City
Alfred University, Alfred
CUNY – Hunter College, New York City
CUNY – Kingsborough Community College, Brooklyn
CUNY – Queens College, Flushing
CUNY – Queensborough Community College, Bayside
CUNY – Sophie Davis School of Biomedical Education,
New York City
CUNY – York College, Jamaica
Clarkson University, Potsdam
Colgate University, Hamilton
College of Mount Saint Vincent, Riverdale
College of New Rochelle, New Rochelle
Cooper Union (The), New York
Dominican College, Orangeburg
Five Towns College, Dix Hills
Fordham University, Bronx

Hartwick College, Oneonta
Herkimer College – SUNY, Herkimer
Hobart and William Smith Colleges, Geneva
Hofstra University, Hempstead
Iona College, New Rochelle
Island Drafting and Technical Institute, Amityville
Ithaca College, Ithaca
Le Moyne College, Syracuse
LIM College, New York
Long Island University, Brookville, Brooklyn
Manhattan College, Riverdale
Manhattanville College, Purchase
Marymount Manhattan College, New York City
Molloy College, Rockville Centre
Mount Saint Mary College, Newburgh
Nassau Community College – SUNY,
Garden City
Nazareth College, Rochester
New York Film Academy, New York
New York Institute of Technology, Old Westbury
Nyack College, South Nyack
Pace University, New York City and Pleasantville
Rensselaer Polytechnic Institute, Troy
Rochester Institute of Technology, Rochester
Sage Colleges (The), Albany
Saint Bonaventure University, St. Bonaventure
Saint John Fisher College, Rochester
Saint Joseph’s College, Patchogue
Saint Thomas Aquinas College, Sparkill
Siena College, Loudonville
SUNY – Albany University, Albany
SUNY – Binghamton University, Binghamton
SUNY – University at Buffalo, Buffalo
SUNY – Stony Brook University, Stony Brook
SUNY – Alfred State College, Alfred
SUNY – Brockport State College, Brockport
SUNY – Buffalo State College, Buffalo
SUNY – Delhi, Delhi
SUNY – College of Environmental Science &
Forestry, Syracuse
SUNY – Farmingdale State College, Farmingdale
SUNY – Fashion Institute of Technology, New York
SUNY – Fredonia State College, Fredonia
SUNY – Morrisville, Morrisville
SUNY – New Paltz, New Paltz
SUNY – Old Westbury, Old Westbury
SUNY – Oneonta, Oneonta
SUNY – Oswego, Oswego
SUNY – Plattsburgh, Plattsburgh
SUNY – Polytechnic Institute, Utica
SUNY – Potsdam, Potsdam
SUNY – Purchase College, Purchase

Suffolk County Community College – SUNY,
Selden, Brentwood and Riverhead
Syracuse University, Syracuse
Tompkins Cortland Community College – SUNY,
Dryden
U.S. Army Recruiting, Hempstead
University of Rochester, Rochester
Utica College, Utica
Vaughn College, Flushing
Wagner College, Staten Island

NORTH CAROLINA

Guilford College, Greensboro
High Point University, High Point

PENNSYLVANIA

Albright College, Reading
Drexel University, Philadelphia
Elizabethtown College, Elizabethtown
Franklin and Marshall College, Lancaster
Johnson College, Scranton
King’s College, Wilkes-Barre
La Salle University, Philadelphia
Marywood University, Scranton
Pennsylvania State University, University Park
Saint Francis University, Loretto
Saint Joseph’s University, Philadelphia
University of Scranton, Scranton
West Chester University of PA, West Chester
Wilkes University, Wilkes-Barre
York College of Pennsylvania, York

RHODE ISLAND

Johnson & Wales University, Providence
Roger Williams University, Bristol
University of Rhode Island, Kingston

VERMONT

Castleton State University, Castleton
Green Mountain College, Poultney
Northern Vermont University – Lyndon,
Lyndonville

VIRGINIA

Christopher Newport University, Newport News
Marymount University, Arlington
Roanoke College, Salem

WISCONSIN

Lawrence University, Appleton

NCA Fall 2017 College EXPO Committee

Nassau Counselors' Association President

Sue Moller

Lynbrook High School

Committee Chairs

Frank Pizzardi

SUNY College at Old Westbury

Dr. Joy-Anne D'Anca

Carle Place Junior/Senior High School

Committee

Mary Marquez Bell

SUNY College at Old Westbury

Donna Orleman

L.I. Lutheran Middle and High School

Gina Christel

Garden City High School

Cynthia Rossi

Nassau Counselors' Association

Robert Germino

Nassau Counselors' Association

Gloria Schetty-Plante

Laurel Publications

Sarah Taiclet

SUNY College at Old Westbury



Points to Consider when Selecting A College

You should try to select a college which matches your interests and needs as closely as possible. To do this, you should consider the ways in which colleges differ. Listed below are ten areas of difference from one college to another. If you can utilize these ten items to describe what you want in a college, you should begin to narrow your selection.

1. PROGRAMS OF STUDY. Not all colleges offer all major fields of study. You should choose a field which interests you, and will prepare you for a particular career, and then examine colleges and universities which offer that field. If you have narrowed your interest to two or three majors, select a college which offers them all. If you are undecided as to a major, select a college which allows you to begin without declaring a major, and which offers good academic advising and counseling.

2. LOCATION. One important decision is whether you will live on campus or commute. If you select a college near home, you still may live on campus if there are dorms. If you select a college away from home, you will probably live on campus, although some colleges allow students to live in nearby apartments. The second aspect of location is the actual setting of the college – is it rural, urban, or suburban? This difference could greatly affect the lifestyle you will take part in during the next four years. Think seriously about where you want to live.

3. SIZE. College and universities differ in size of enrollment from several hundred students to tens of thousands. Obviously, there can be tremendous differences, both educationally and socially, in attending different size institutions. There are advantages to small, large, and medium sized colleges. The important thing is to decide what you want. Small colleges can offer a personalized education, and you can get to know most of the students and faculty. Large institutions can offer a greater variety of courses and often have more elaborate facilities.

4. REPUTATION. Some institutions have established reputations over time for being excellent in certain fields. Others are generally thought to be good in everything they do. And some are known more for sports than for academics. Be careful not to make a decision on reputation alone. Find out if the college warrants the reputation it has. Just because an institution has been around for a hundred years does not automatically make it good. However, many old, established institutions have earned their reputations and offer an excellent education.

5. CAMPUS LIFE. When you go to college, a relatively small portion of your time is actually spent in classrooms. Other time is spent in the library and laboratory. However, a great deal of time is spent in the dorms, the student center, the cafeteria, and wherever other students gather. The campus life outside of class is very important, and you should try to determine what that life is like at the college you plan to attend.

6. TYPE. There are several differences which might be important to you. Some colleges are public while some are private. Public institutions are tax supported and offer lower tuition. Many public (and some private) institutions are two-year colleges offering terminal as well as transfer programs. If you attend a two-year institution, plan your program of studies so you can transfer to a four-year college if you want to.

7. COED OR SINGLE SEX. There was a time when many colleges were for men only or women only. Today, the overwhelming majority of college are coed. Single sex institutions still exist, and some students prefer to attend those institutions.

8. RELIGIOUS AFFILIATION. In the early days of American higher education, most colleges had a strong religious affiliation. Today, the majority of institutions are public, with no church relationship. Some private colleges have maintained church affiliation, although attendance at these colleges is usually open to students of all religions. Almost all colleges offer a variety of religious services either on campus or in the immediate vicinity.

9. FRIENDS. You do not have to attend college where your friends do. However, if you have friends or relatives who have attended colleges you are considering, ask them what they like and dislike about the college. Remember, their interests may not be the same as yours, but your friends are a good source of honest information.

10. COST. The cost of higher education is a serious consideration but it should not be the major determining factor of where you will attend. All colleges and universities have financial aid programs to help meet the cost of attending. Make your decision on the factors listed above, and then see how the colleges you select can help you meet the costs.



A uniquely personalized approach to learning. No wonder everyone's talking about Adelphi.

Spend the day, your way, at our Open Houses:

- Take a tour of our amazing campus—named Best Public Garden 2017.
- Meet with your admissions counselor and financial aid representative.
- Meet personally with our award-winning faculty about our 50 different majors.
- Learn about our paid internships and nearly 80 clubs and organizations.

Upcoming Fall Open Houses

Garden City:

Saturday, October 21, 2017 • 10:00 a.m.–1:30 p.m.

Sunday, November 19, 2017 • 10:00 a.m.–1:30 p.m.

Register today at Adelphi.edu/FallOH

ADELPHI
UNIVERSITY
NEW YORK

LIU Post

A CAMPUS *of* DISTINCTION

Forbes

Top 10 "Hot Colleges
in the Making Under
Innovative Management"



Ranked a College
of Distinction



The Princeton Review
"Best Business Schools"



The
Princeton
Review

"Best Northeastern
University"



U.S. News and
World Report Best
Colleges in 2017

LIU GRADUATES LAND POSITIONS AT
THE WORLD'S TOP COMPANIES



For a full list of upcoming events, visit: liu.edu/post/yes

Questions to Ask College Counselors at the EXPO

College Choice Guide

**How do you select the right college for you?
Ask these questions to narrow your options.**

Academics and Career Planning

- Does this college offer the major that interests me? How strong is this school's program?
- Will my AP and previous college credits transfer?
- What is the average number of students in each class?
- What percentage of students graduate in 4 years?
- How easy is it to get the courses I want at the times I want?
- What career planning services are available?
- What does the school do to help graduates find jobs? Does the school provide free job placement services?
- What percentage of graduates find jobs?

Finances

- How much is tuition? Room and board?
- Are payment plans available?
- What kind of financial aid does the school offer?
- Are there work-study programs?
- What kind of refund can I get if I have to drop out?

Housing and Campus Resources

- Where do freshmen/sophomores/juniors/seniors live?
- How much is housing? Is it easy to get on-campus housing?
- What kind of meal plan is offered in the dorms?
- What type of IT facilities are available?
- What library and research facilities can students use?
- What health and fitness facilities are on campus?

Student Life

- How diverse is the campus?
- What percentage of the students commute?
- What student organizations are active on campus?
- What varsity and intramural sports are on campus?
- What kind of transportation is available on campus?
- How safe is the campus? Crime statistics?

Tips on Planning Your Campus Visit

Pick a normal school day to visit. Avoid graduation, three-day weekends and open houses. Contact the school and confirm their tour, visit and interview policies.

Stay in a dorm overnight. You'll get a chance to talk with current students and find out what life on campus is really like.

Bring along a list of questions for each school. After visiting a few schools, details can get blurry. List the points about the school that stand out.

Go to class. How do you feel about the size of the classes, the instructors and the level of competition?

Finding Information

Know where to look and you'll get the facts you need.

- Consult your school counselor. He/she will have college guidebooks and brochures.
- Surf the Internet. Visit the universities' websites.
- Contact the college's admissions office. They can put you in touch with a student volunteer who will answer your questions.
- Arrange an informational interview with an alumnus. Call the school's alumni association for names

**For more tips, visit
www.fastweb.com**

How to Make the Most of Your Visit to the Fall College EXPO

The Fall College EXPO Committee has prepared this chart to help you record information about the colleges and schools you are investigating. Decide ahead of time which college representatives you want to speak with so that you may make the most of your visit.

COLLEGE NAME				
TYPE OF SCHOOL Four-year Two-year Special				
ENVIRONMENT Urban Suburban Rural				
LOCATION Commuting New York State 100 miles +				
STUDENT BODY Coed Men Women				
SIZE Small (under 2000) Medium (2000-6000) Large (6000+)				
ADMISSION REQUIREMENTS Rank in Class Average SAT ACT Achievements Other				
FINANCIAL AID INFORMATION Scholarships Loans Grants				
INTERVIEW/CAMPUS VISITS Required Recommended Special Opportunities				
COLLEGE EXPENSES Tuition and fees Room and Board Other				
HOUSING Dorms Off-Campus Apartments Fraternity/Sorority				
CAMPUS LIFE Organizations Sports				

COLLEGE NAME				
TYPE OF SCHOOL Four-year Two-year Special				
ENVIRONMENT Urban Suburban Rural				
LOCATION Commuting New York State 100 miles +				
STUDENT BODY Coed Men Women				
SIZE Small (under 2000) Medium (2000-6000) Large (6000+)				
ADMISSION REQUIREMENTS Rank in Class Average SAT ACT Achievements Other				
FINANCIAL AID INFORMATION Scholarships Loans Grants				
INTERVIEW/CAMPUS VISITS Required Recommended Special Opportunities				
COLLEGE EXPENSES Tuition and fees Room and Board Other				
HOUSING Dorms Off-Campus Apartments Fraternity/Sorority				
CAMPUS LIFE Organizations Sports				

Directory of Colleges and Career Schools

Institution Address Phone E-mail Web Site	Public/Private 2 or 4 year Enrollment Student Body	Undergraduate Majors or Schools & Colleges Honors Program LD Program/Services	Sports Division	Tuition: Instate: Out-of-state: Room & Board: Fees:	Tests Required Grade Point Average	Deadlines: Application Fin Aid Types of Fin Aid Forms
ADELPHI UNIVERSITY 1 South Avenue Garden City, NY 11530 (516) 877-3050 admissions@adelphi.edu; www.adelphi.edu	Private 4 yr 5,071 Coed	Arts & Sciences, Nursing & Public Health, Social Work, Management & Business, Education, Derner Inst. of Psychological Studies. <i>Nationally known Learning Resource Program, highly individualized, innovative approaches to teaching academic & life skills. Honors College-Supportive environment, engaging seminars, independent research projects.</i>	NCAA Div II	\$34,034 \$34,034 \$13,460	SAT/ACT 3.0	March 1 FAFSA
ALBRIGHT COLLEGE PO Box 15234 Reading, PA 19612-5234 1-800-252-1856 albright@alb.edu; www.albright.edu	Private 4 yr 1,850 Coed	Accounting, Am Civilization, Biochem, Bio, Busi Admin, Chem, Child & Family Stu, Commun, Comp Sci, Economics, Edu, Eng, Fashion Merch & Design, Hist, Latin Am Studies, Math, Philosophy, Poli Sci, Psych, Relig Stu, Soc. <i>Honor Program- Qualify in two ways-be a Jacob Albright Scholarship recipient or earn an Albright cumulative GPA of 3.5. LD Services-faculty advising, peer tutoring, time management skills</i>	NCAA Div III	\$40,644 \$40,644 \$11,188 \$ 900	SAT/ACT optional 3.49	Feb 1 FAFSA
ALFRED UNIVERSITY Office of Admissions, 1 Saxon Drive Alfred, NY 14802-1205 1-800-541-9229; (607) 871-2115 admissions@alfred.edu; www.alfred.edu	Private/Public 4 yr 2,000 Coed	Over 60 majors and concentrations offered through the College of Liberal Arts & Sciences, College of Professional Studies, School of Art & Design, School of Business, and Inamor School of Engineering. Unique majors include Athletic Training, Biomaterials, Ceramic, Glass, Materials Science, Renewable Energy Engineering. <i>Honors-Students chosen based on academic record and intellectual interests. Office of Special Academic Support provides support, consultation, & advocacy services</i>	Div III	\$31,274 private \$18,412 public \$12,272 \$ 990	SAT or ACT required B/B+	Feb 1 priority Feb 1 priority FAFSA, Alfred Form
AMERICAN UNIVERSITY 4400 Massachusetts Avenue NW Washington, DC 20016 (202) 885-6000 admissions@american.edu; www.american.edu	Private 4 yr 7,259 Coed	College of Arts and Sciences, Kogod School of Business, School of Communication, School of Education, School of International Service, School of Professional & Extended Studies, School of Public Affairs, Washington College of Law. Internships, Study Abroad	NCAA Patriot League	\$44,500 \$44,500 \$18,000	SAT I & II/ ACT test optional	Nov 15 ed1, Jan 15 ed2 and reg
ARIZONA STATE UNIVERSITY PO Box 870112, Tempe, AZ 85287 (480) 965-7788 admissions@asu.edu; www.asu.edu	Public 4 yr 68,000 Coed	Over 300 majors in 16 colleges and schools. Business, Design & Arts, Education, Engineering, Journalism, Law, Liberal Arts, Nursing, Public Policy, Technology, Sustainability. Earth & Space Exploration, Chinese Flagship Program. <i>Honors program-Barrett Honors College. LD-Disability Resource Center</i>	NCAA Div I PAC 12	\$10,157 \$25,000 \$14,000	SAT 1180 ACT 24 3.0	Feb 1 Jan 1 FAFSA

ASSUMPTION COLLEGE 500 Salisbury Street Worcester, MA 01609-1296 1-866-477-7776; (508) 767-7285 admissions@assumption.edu	Private 4 yr 2,050 Coed	Account, Actuarial Sci, Anthro, Art Hist, Bio, Biotech, Business, Chem, Classics, Comm, Comm Serv Learn, Compar Lit, Comp Sci, Criminology, Cultur Affairs, Econ, Edu, Eng, Enviro Sci, Finance, Foreign Lang, Foundations Prog, French, Geog, Global Studies, Graphic Design, Health Sci, Hist, Human Servs, Int'l Business, Latin Am Stu, Law & Econ, Linguis, Lit, Mgt, Mktg, Mass Commun, Math, Molecular Bio, Music, Organizational Comm, Philos, Poli Sci, Psych, Rehab Counsel, Soc, Sport Mgmt, TV, Theater, Theol Visual Arts, Women's Stu, French, German/Italian Stu, Pre-Dental, -Law, & -Med. <i>Honors Program-50 accepted from freshmen class, special courses, housing & research preference</i>	Div II	\$38,850 \$38,850 \$12,000 \$ 750	SAT I/ACT optional	Nov 1 ea, Dec 15 eaII, Feb 15 reg FAFSA
BAY PATH UNIVERSITY 588 Longmeadow Street Longmeadow, MA 01106 (413) 565-1133 amoran@baypath.edu; www.baypath.edu	Private 4 yr 2,300 Women-UG Coed-Grad	30 majors & minors. Accounting, Biochem, Bio, Biotech, Business, Child Psych, Crim Just, Cybersecurity, Early Child Edu, Forensic Psych, Forensic Sci, Health & Human Stu, HR Mgmt, Interdisc Studies, Interior Design, Legal Stu, Liberal Stu, Marketing, Medical Sci, Neurosci, Occu Ther, Operations Mgmt, Paralegal/Legal Asst, Pre-Law Track, Pre-Phys Asst, Psych, Small Business Develop. 24 Masters programs complete online venture	NCAA Div II	\$30,859 \$30,859 \$12,852 included	SAT/ACT	FAFSA
BECKER COLLEGE 61 Sever Street, Worcester, MA 01609 (508) 373-9400 admissions@beckercollege.edu www.beckercollege.edu; www.becker.edu	Private 4 yr 1,900 Coed	Business, Criminal Justice, Design (Game Design, Game Programming, Game Production, Communication Design, Graphic Design), Elementary & Early Childhood Education, Equine Studies, Health Sciences, Humanities, Pre-Vet, Exercise Science, Legal Studies, Nursing, Forensics. <i>Tutoring Center – Professional tutors and academic coaching. Honors– Business/Criminal Justice</i>	NCAA Div III	\$31,500 \$31,500 \$11,500 \$ 960	SAT I/ACT 2.7	Rolling, (Nursing Feb 15) Priority March 1 FAFSA
CASTLETON UNIVERSITY 86 Seminary Street Castleton, VT 05735 1-800-639-8521 info@castleton.edu www.castleton.edu	Public 4 yr 2,100 Coed	Art, Business Admin (Acctg, Mgmt, Marktg), Athletic Training, Bio, Chemistry, Communication, Comp Info Sys, Crim Justice, Digital Media, Edu, Environ Sci, Exercise Sci, Forensic Psych, Geology, Graph Design, Health Sci, Hist, Lit, Math, Music, Natural Sci, Nursing (RN), Phys Edu, Psych, Soc Sci, Soc Studies, Soc Work (BSW), Soc, Spanish, Sports Admin, Theater Arts. 5 yr JD Law. <i>Honors Prog-by invitation & application scholarship offered in conjunction with FY Honors. LD Program-Academic Support Center provides writing and math clinics and tutoring</i>	NCAA Div III	\$37,800 total	SAT 500 each section ACT 21 comp 3.0	Rolling Feb 15 FAFSA
CHRISTOPHER NEWPORT UNIVERSITY 1 Avenue of the Arts, Newport News, VA 23606 1-800-333-4268; (757) 594-7015 admit@cnu.edu; www.cnu.edu	Public 4 yr 5,000 Coed	College of Liberal Arts & Science, Joseph Luter III School of Business: Art, Biology, Business, Communication, Economics, Eng, Enviro Sci, Finance, Hist, Physics, Govern & Public Affairs, Mgmt, Marketing, Math, Modern Lang, Music, Philos, Comp Sci, Psych, Sociology, Theatre. <i>Honors Prog-Competitive, 3.75 GPA, 1250 SAT (critical reading & math); 28 ACT. LD Services available</i>	NCAA Div III	\$12,526 \$23,824 \$10,634	SAT I/ACT	Dec 1 EA, Mar 1 reg March 1 FAFSA

City University of New York – CUNY

HUNTER COLLEGE — CUNY 695 Park Avenue New York, NY 10065 (212) 772-4490; admissions@hunter.cuny.edu www.hunter.cuny.edu	Public 4 yr 17,000 Coed	Over 100 majors in Schools of: Arts and Sciences, Education, Health Professions, Urban Public Health, Nursing, Social Work. Pre-professional programs. <i>Macaulay Honors College-free tuition/four years, two years free room & board, \$7,500 educational stipend for study abroad, unpaid internship, etc. Internships with NYC companies. LD services-Office of Accessibility coordinates testing & classroom accommodations.</i>	NCAA Div III	\$ 6,330 \$18,440 13,000 \$ 450	SAT/ACT	Feb 1 Macaulay Honors-Dec 1 Feb 15 FAFSA
--	----------------------------------	---	-----------------	--	---------	--

NASSAU COUNSELORS' ASSOCIATION – FALL 2017 COLLEGE EXPO – PAGE 18

Institution Address Phone E-mail Web Site	Public/Private 2 or 4 year Enrollment Student Body	Undergraduate Majors or Schools & Colleges Honors Program LD Program/Services	Sports Division	Tuition: Instate: Out-of-state: Room & Board: Fees:	Tests Required Grade Point Average	Deadlines: Application Fin Aid Types of Fin Aid Forms
KINGSBOROUGH COMMUNITY COLLEGE — CUNY 2001 Oriental Blvd, Brooklyn, NY 11235 (718) 368-5811 info@kbcc.cuny.edu www.kingsborough.edu	Public 2 yr 14,000 Coed	Lib Arts, Fine Arts, Perform Arts, Acting, Bio, Broadcasting Mgmt & Tech, Busi Adm, Chem, Community Health, Compu Info Sys, Compu Sci, Early Child Edu, Engin Sci, Graphic Design & Illust, Journal/Prnt Media, Maritime Tech, Math, Mental Health & Human Sci, Nursing, Office Admin & Tech, Phys Ed, Phys Ther Asst, Physics, Polysomnographic Tech (sleep tech), Retail Merch, Speech Comm, Surgical Tech, Tourism/Hosp, Website Devel & Admin. Certificate programs in Entrepren Stu, Exercise Sci/Person Train, Alcoholism/Substance Abuse Counsel. <i>Honors Prog-challenging courses, independent study enrichment projects. LD Services available</i>	Div III	\$ 4,800 \$210 credit N/A \$226.45	HS Diploma or GED	Rolling June 30 FAFSA
QUEENS COLLEGE — CUNY 65-30 Kissena Blvd, Flushing, NY 11367-1597 (718) 997-5600 admissions@qc.cuny.edu; www.qc.edu	Public 4 yr 20,610 Coed	Over 50 majors in the Divisions of Arts and Humanities, Education, Mathematics and the Natural Sciences, and Social Sciences <i>Honors Programs-Macaulay Honors College, Freshman Honors, TIME 2000 and BALA (Business and Liberal Arts). LD Services available</i>	Div II	\$ 6,938 \$11,200 N/A \$ 200	SAT 1100 m&v combined 80	Rolling FAFSA
QUEENSBOROUGH COMMUNITY COLLEGE — CUNY 222-05 56th Ave., Bayside, NY 11364 (718) 281-5000 admissions@qcc.cuny.edu; www.qcc.cuny.edu	Public 2 yr 16,000 Coed	Accounting, Biotechnology, Business Admin, Childhood Education, Criminal Justice, Engineering Science, Forensic Science, Gallery & Museum Studies, Liberal Arts & Sciences, Massage Therapy, Mathematics & Science, Music Production, Nursing, Visual & Performing Arts. 2 yr transfer & career option programs. <i>LD Services for students with disabilities</i>	NCAA Div III	\$ 4,800 N/A	HS diploma	Feb 1 Fall Sept 15 Spr FAFSA
SOPHIE DAVIS BIOMEDICAL EDUCATION PROGRAM/CUNY SCHOOL OF MEDICINE 160 Convent Ave, New York, NY 10031 (212) 650-7707 www.cuny.cuny.edu/csom	Public 2 yr-5yr 410 Coed	Prepare for a career as a medical doctor including primary care medicine. Carefully designed program enables you to earn the BS/MD in just seven years. MCAT's not required. The BS degree and MD degree will be conferred by the City College of New York then you move on to complete medical training at St. Barnabas Hospital in the Bronx	N/A	\$ 6,533	SAT/ACT 85 min	Jan 8
YORK COLLEGE — CUNY 94-20 Guy R. Brewer Blvd. Jamaica, NY 11451 (718) 262-2165 admissions@york.cuny.edu www.york.cuny.edu	Public 4 yr 7,100 Coed	Over 40 degrees: Account, Afro-Am Stu, Anthro, Art Hist, Aviation Mgt, Bio, Busi Admin, Chem, Commun Tech, Comp Sci, Econ, Eng, Envir Health Sci, Geo, Gerontology, Health Mgmt, Hist, Info Sys Mgt, Markt, Math, Med Tech, Music, Nursing, Occ Ther (BS/MS), Pharm Sci, Phys Asst, Pre-Arch, -Engin, -Dental, -Med, -Law, Psych, Puerto Rican Stu, Soc Work, Socio, Teacher Cert. <i>Honors Program-60-credit interdisc prog, seminars, scholarships, early reg, research projects, Louis Stokes Alliance for Minority Participation in Sci, Math, Engin, & Tech, Aviation Inst 3 Scholar Prog. LD-enrichment services for students/disabilities, assist tech resource room</i>	NCAA	\$ 2,300 \$415 credit N/A \$65 freshmen & \$75 transfers	SAT 900 combined score 78 GED 3.0	Rolling FAFSA, TAP
CLARKSON UNIVERSITY PO Box 5605, Potsdam, NY 13699-5605 1-800-527-6577; (315) 268-6480 admission@clarkson.edu www.clarkson.edu	Private 4 yr 3,300 Coed	Engineering, Business, Science, Lib Arts, Pre-PT, -Med, -Dental, -Law, Interdisc Engineering & Mgt, Business & Lib Arts, Enviro Sci & Policy. <i>Honors Program: Intensive 4 yr program. Top 10% of class or demonstrate outstanding academic & leadership achievements. 30 students/yr. LD Programs available.</i>	Div III Div I men's & women's ice hockey	\$46,700 \$46,700 \$14,794 \$ 1,250	SAT/ACT	Jan 15 Feb 1 FAFSA

COLGATE UNIVERSITY 13 Oak Drive, Hamilton, NY 13346 (315) 228-7401 admissions@colgate.edu; www.colgate.edu	Private 4 yr 2,922 Coed	54 concentrations in 22 department, international and domestic semester-long study groups, independent studies and internships. Core curriculum	Div I	\$53,650 \$53,650 \$13,520 \$ 330	SAT I / ACT 3.80	Jan 15 Jan 15 CSS Profile
COLLEGE OF MOUNT SAINT VINCENT 6301 Riverdale Avenue, Riverdale, NY 10471 1-800-665-2678; (718) 405-3200 admissions.office@mountsaintvincent.edu www.mountsaintvincent.edu	Private Catholic 4 yr 1,500 Coed	Liberal Arts, Business, Communications, Education, Language, Nursing, all Pre-Medical Sciences, Pre-PT, Pre-OT, Psychology, Sociology/Criminal Justice, Urban Affairs, Allied Health, English (with a strong writing minor). <i>Honors courses available upper & lower division. LD Services-free tutoring available to all students in the Resource Center. Part of Catholic & New York Colleges of Distinction.</i>	NCAA Div III	\$35,620 \$35,620 \$ 9,500 \$920	SAT 1050 ACT 22 86	Nov 15, April 1 priority FAFSA required
COLLEGE OF NEW JERSEY (THE) PO Box 7718, Ewing, NJ 08628 (609) 771-2131 tcnjinfo@tcnj.edu www.tcnj.edu	Public 4 yr 6,500 Coed	School of the Arts & Communication; Science, Engineering, Education, Nursing, Health & Exercise Science, Business, Humanities & Social Science. Most popular majors: Accounting, Biology, Chemistry, Education, Health & Exercise Science, Mechanical Engineering, Interactive Multimedia, Nursing, Psychology. Apply via the Common Application. <i>Collegewide Honors Program; Office for Students with Differing Abilities</i>	NCAA Div III	\$18,000 \$28,000 \$12,001 included	SAT 1260-1390 ACT 29 A-B+	Feb 1 March 1 FAFSA
COLLEGE OF NEW ROCHELLE (THE) 29 Castle Place, New Rochelle, NY 10805 1-800-933-5923; (914) 654-5452 admission@cnr.edu www.cnr.edu	Private 4 yr 500 Female; *nursing coed	Education, Art, Biology, English, Communication Arts, Nursing, Psychology, Business and more through the School of Arts and Sciences and the School of Nursing. Study Abroad. <i>Honors Program-interdisciplinary program under close advisement both within & outside major field. Jr. year Colloquium/faculty expert for independent study, present research at a college-wide Honors Conference Day. Honors Diploma. LD Services-meet directly with the VP of Student Services for options and resources.</i>	Div III	\$35,000 \$35,000 \$15,000 \$ 550	SAT / ACT	Rolling TAP, FAFSA
THE COOPER UNION FOR THE ADVANCEMENT OF SCIENCE AND ART 30 Cooper Square Suite 300 New York, NY 10003; (212) 353-4120 admissions@cooper.edu; www.cooper.edu	Private 4 yr 900 Coed	Bachelor of Architecture, Bachelor of Fine Arts, Bachelor of Engineering degrees in Chemical, Civil, Electrical and Mechanical Engineering, and a Bachelor of Science in General Engineering <i>Very limited LD Services</i>	Club sports	\$21,000 yr 1st time 1/2 Tuition Scholarsh \$14,000	Art/SAT I 1100-1200; Arch/SAT I 1200-1300; Eng /SAT I 1400 Sat II 700 Math /Chem or Physi	Dec 1 ed Art, Arch & Engine; Jan 9 reg Art; Arch, Engine FAFSA
CURRY COLLEGE 1071 Blue Hill Avenue Milton, MA 02186 1-800-669-0686; (617) 333-2210 adm@curry.edu www.curry.edu	Private 4 yr 2,000 Coed	Accounting, Biology, Biochem, Communication, Community Ed, Crim Just, Early Child, Elementary & Special Education, English, Design, Health, Information Technology, Liberal Studies, Mgmt, Nursing, Out of School Time Edu, Philosophy, Politics & History, Psych, Public Health, Sociology, Software Development, Visual Arts. <i>Freshman Honors Program, Study Abroad, Internships. LD program-PAL-Program for Advancement of Learning-deadline March 1</i>	NCAA Div III	\$36,780 \$36,780 \$14,755 \$ 1,765	SAT I / ACT 1000-1100 2.7-3.3	Dec 1 ea, April 1 reg May 1 FAFSA
DOMINICAN COLLEGE 470 Western Highway Orangeburg, NY 10962 (845) 848-7800 admissions@dc.edu; www.dc.edu	Private 4 yr 2,000 Coed	Athletic Training, Bio (Pre-Med), Business (accounting, adminis, computer info sys, finance, mgmt, marketing) Communications Studies, Criminal Justice, Education (elementary, secondary, special), Liberal Arts, Nursing, Occu Therapy, Phys Therapy, Psychology, Social Sciences, Social Work. <i>Honors Program-SAT M+V1100, GPA 3.0+. LD Services available-IEP evaluation</i>	Div II	\$26,578 \$26,578 \$12,420	SAT 700 ACT 21 3.0	Rolling Rolling FAFSA

NASSAU COUNSELORS' ASSOCIATION – FALL 2017 COLLEGE EXPO – PAGE 20

Institution Address Phone E-mail Web Site	Public/Private 2 or 4 year Enrollment Student Body	Undergraduate Majors or Schools & Colleges Honors Program LD Program/Services	Sports Division	Tuition: Instate: Out-of-state: Room & Board: Fees:	Tests Required Grade Point Average	Deadlines: Application Fin Aid Types of Fin Aid Forms
DREXEL UNIVERSITY 3141 Chestnut Street Philadelphia, PA 19104 1-800-2-DREXEL; (215) 895-2400 enroll@drexel.edu; www.drexel.edu	Private 4 yr 16,896 Coed	<i>Colleges of:</i> Arts & Sciences; Biomedical Engineering, Science & Health Systems; Computing & Informatics; Engineering; Nursing & Health Professions; Business; Media Arts & Design. <i>Schools of:</i> Education; Public Health; Center for Hospitality & Sport Mgmt. <i>New & Unique Majors:</i> Entrepreneurship, BA/BS/MD, Music Industry, Custom Design, Architecture, Computer Security, Game Art & Production, Business and Engineering, BS/DPT. <i>Pennomi Honors College. Office of Disability Services–tutoring, academic assistance, in-class adjustments, technology</i>	Div I	\$44,646 \$44,646 \$14,367 \$ 2,370	SAT ACT 3.5	Nov 1 ea, Jan 15 reg Ea CSS Nov 15 Feb 15 FAFSA, CSS Profile
EASTERN CONNECTICUT STATE UNIV. 83 Windham Street, Willimantic, CT 06226 (860) 465-5286 admissions@easternct.edu www.easternct.edu	Public 4 yr 4,500 Coed	Account, Bio, BioChem, Business Admin, Commun, Comp Sci, Econ, Eng, Environ Sci, Finance, Fine Arts, Health Sci, Hist, Labor Relations & Human Resource Mgmt, Liberal Arts, Math, Mgmt Info Sys, New Media, Philosophy, Phys Edu, Political Sci, Psych, Sociology, Soc Work, Spanish, Sports & Leisure Mgmt. Studio Art, Edu (PK-12 Cert), Women's & Gender Studies. <i>Honors Program-SAT totaling 1250 & top 15% in class are considered. 300-400 word essay for all Council members to read. Must express well. LD-Office of AccessAbility Seros 860-465-0189</i>	NCAA Div III	\$11,089 \$23,778 \$13,010	SAT 2.8+	May 1 March 1 Fall Nov 15 Spring FAFSA, Eastern's Form
ECKERD COLLEGE 4200 54th Avenue So., St. Petersburg, FL 33711 800-456-9009 x8331, (727) 864-8331 admissions@eckerd.edu www.eckerd.edu	Private 4 yr 1,862 Coed	Most popular majors: Marine Bio, Environ Studies, Psychology, Int'l Relations, Int'l Business, Creative Writing, Business Administration & Communication. New programs: Ancient Studies, Journalism minor, Arabic Minor. <i>Honors Program by invitation, Phi Beta Kappa. LD Services-counseling, extended test time, private test area, notetakers, academic coach, faculty mentor in major</i>	Div II	\$41,192 \$41,192 \$11,682	SAT 1200 ACT 25 3.3	Nov 15 ea Rolling FAFSA
ELIZABETHTOWN COLLEGE One Alpha Drive, Elizabethtown, PA 17022 (717) 361-1400 admissions@etown.edu; www.etown.edu	Private 4 yr 1,800 Coed	50+ majors, 80+ minors and concentrations. Unique: Actuarial Sci, Engineering, Occupational Ther, Music Ther, Int'l Business, Spanish Secondary Ed. <i>Honors Program-24 credits of more challenging and rigorous coursework, can apply for a \$1,000 academic grant for expenses related to honors. LD Services-Center for Student Success offers free tutoring, study skills, test-taking strategies & time management. Office of Disability Services ensures access and ability to succeed</i>	NCAA Div III	\$45,350 \$45,350 \$10,990	SAT 1040-1250 or ACT B+	March 1 March 15 FAFSA, E'town form, Merit Sch
EMMANUEL COLLEGE 400 The Fenway, Boston, MA 02115 (617) 735-9715 enroll@emmanuel.edu; www.emmanuel.edu	Private 4 yr 1,840 Coed	Am Studies, Art, Biochem, Bio, Biostatistics, Catholic Stu, Chem, Commun, Comp Pol & Int'l Relations, Crime & Just, Economics, Educ, Eng Lit, Environ Sci, Forensic Sci, Global Stu, Graphic Des, History, Info Tech, Mgmt, Marketing, Math, Neurosci, Perform Arts, Philos, Physiology, Poli Sci, Psych, Religious Stu, Soc Inequality & Soc Just, Spanish, Soc, Women's Studies. <i>Honors Program-develop analytical, research, writing & presentation skills to prepare to apply for graduate programs. LD Services-full access to educational programs & assistance through Academic Resource Center (ARC)</i>	NCAA Div III	\$38,584 \$38,584 \$14,628	Test Optional B	Nov 1 ea1, Dec 15 ea2, February 15 reg Feb 15 FAFSA

FAIRLEIGH DICKINSON UNIVERSITY 1000 River Rd H-DH3-10, Teaneck, NJ 07666 (Florham Campus: 285 Madison Ave M-MRI-01 Madison, NJ 07940) 1-800-FDU-8803; (201) 692-2553 admissions@fdu.edu; www.fdu.edu	Private 4 yr 8,500 Coed	100+ UG programs in Business, Education, Engineering, Health Sciences, Hotel & Tourism Mgmt, Liberal Arts, Nursing, Pharmacy, Sciences, Theater, Film & Animation. Accelerated Programs such as Teacher Preparation Program (QUEST). Campuses in England and Canada. <i>Honors Programs. LD Services-Regional Center at both campuses</i>	Div I-Metro Div III- Florham	\$38,418 Metro \$40,752 Florha \$12,300 \$ 1,500	SAT/ACT 3.34	Rolling, Jan 15 preferred March 1 FAFSA
FISHER COLLEGE 118 Beacon Street, Boston, MA 02116 (617) 236-8818 admissions@fisher.edu; www.fisher.edu	Private 4 yr 700 Coed	Management (concentrations in Human Resource, Health Care, Hospitality, Fashion, Marketing, Accounting, Leadership), Biology, Event Management, Human Services, Communications, Sport Management. Unique major: Fashion Merchandising. <i>Honors Program</i>	NAIA Div II	\$29,000 \$29,000 \$15,000 \$ 1,500	SAT/ACT 2.5	Rolling Folling FAFSA
FIVE TOWNS COLLEGE 305 North Service Road, Dix Hills, NY 11746 (631) 656-2110 admissions@ftc.edu; www.ftc.edu	Private 2 yr/4 yr 700 Coed	Audio Recording, Broadcasting, Business Management, Composition, Childhood Education, Film/Video, Journalism, Music Business, Music Education, Music Performance, Songwriting, Theatre Arts. <i>Student Support Services, HEOP Program, MORE Program for Students with Disabilities, PASS Program & SCOPE program</i>	N/A	\$18,980 \$18,980 \$12,200 \$ varies	Test optional 2.5	Rolling see website Pell, TAP, Schlrs, loans individual basis
FLAGLER COLLEGE 74 King Street, St. Augustine, FL 32084 (904) 819-6220 admissions@flagler.edu; www.flagler.edu	Private 4 yr 2,600 Coed	Education, Business, Communication, Criminology, Environmental Science, Finance, Fine Arts, Graphic Design, History, Hospitality & Tourism Management, International Studies, Political Science, Psychology, Sport Management, Sociology	NCAA Div II	\$18,200 \$18,200 \$10,688	SAT 1152 cr/m ACT 23 3.53	Nov 1 ed, March 1 reg FAFSA
FLORIDA INSTITUTE OF TECHNOLOGY 150 W. University Blvd., Melbourne, FL 32901 1-800-888-4348 admission@fit.edu; www.fit.edu	Private 4 yr 4,224 Coed	College of Engineering, College of Sciences and Liberal Arts, School of Aeronautics, School of Management, School of Psychology. Top programs include Marine Biology, Physics/Space Sciences, Aerospace, Engineering, Aviation Management and Psychology, BA in Forensic Psychology	NCAA Div II	\$40,490 Eng/Sci \$36,900 all other majors \$11,000	SAT 1000 ACT 22 3.0	Rolling Feb 1 FAFSA
FLORIDA SOUTHERN COLLEGE 111 Lake Hollingsworth Dr, Lakeland, FL 33801 1-800-274-4131 fscadm@flsouthern.edu www.flsouthern.edu	Private 4 yr 2,500 Coed	Over 50 majors including Accounting, Art, Biology, Business Admin, Chem, Citrus and Horticulture Science, Communication, Criminology, Economics, Education, English, Exercise Science, Mathematics, Music, Nursing, Political Sci, Psychology, Religion, Social Sci, Spanish, Sports Mgt, Theatre Arts, self-designed major. <i>Honors Program. LD Services-Individual basis</i>	NCAA Div II	\$34,774 \$34,774 \$11,204	SAT 1190 ACT 26 3.7	March 1 March 1 FAFSA, FSC form
FORDHAM UNIVERSITY 441 East Fordham Road, Bronx, NY 10458 113 West 60th Street, New York, NY 10023 1-800-FORDHAM; (718) 817-4000 enroll@fordham.edu; www.fordham.edu	Private 4 yr 8,000 Coed	60+ programs in Lib Arts & Business, 3/3 Law, 3/2 BS/MBA, 3/2 Engineering Co-op, Accelerated Grad Programs-Arts & Sciences, Social Service, Education, BFA in Dance w/Alvin Ailey, Theatre, Honors Programs. Fordham College at Rose Hill and Gabelli School of Business Admin (Bronx); Fordham College at Lincoln Center (Manhattan). <i>Selective Honors Program in all colleges. LD Programs-Tutoring and other accommodations</i>	Div I Atlantic 10 Div IAA Patriot Leag (football)	\$42,057 \$42,057 \$15,374	SAT 1830-2050 ACT 27-31 3.7/92/A-	Nov 1 ea; Jan 15 Reg, Nov 1 Perfomance FAFSA, CSS Profile

NASSAU COUNSELORS' ASSOCIATION – FALL 2017 COLLEGE EXPO – PAGE 22

Institution Address Phone E-mail Web Site	Public/Private 2 or 4 year Enrollment Student Body	Undergraduate Majors or Schools & Colleges Honors Program LD Program/Services	Sports Division	Tuition: Instaate: Out-of-state: Room & Board: Fees:	Tests Required Grade Point Average	Deadlines: Application Fin Aid Types of Fin Aid Forms
FRANKLIN AND MARSHALL COLLEGE PO Box 3003, Lancaster, PA 17604-3003 717-358-3951; 877-678-9111 admission@fandm.edu; www.fandm.edu	Private 4 yr 2,225 Coed	Amer Stu, African Stu, Anthrop, Animal Behav, Art & Art Hist, Bio, BioChem, Business, Chem, Classics, Eng, Earth & Environ, Economics, Govern, Hist, Int'l Stu, Judaic Stu, Math, Music, Neurosci, Philos, Psych. Physics, Public Policy, Russian, Sci Tech & Society, Scientific & Philos Studies of the Mind, Soc, Spanish, Theater, Dance & Film, Women & Gender Stu. New: Bioinfo, Public Health	Div III Div I- Wrestling	\$54,280 \$ 54,280 \$ 13,580 included	SAT/ACT test optional SAT II scores encouraged	Nov 15 ed1 Jan 15 ed2 Jan 15 Reg FAFSA, Profile
FRANKLIN PIERCE UNIVERSITY 40 University Drive, Rindge, NH 03461 1-800-437-0048 admissions@fpc.edu www.fpc.edu	Private 4 yr 1,400 Coed	Accounting, Anthropology/Archaeology, Biology/Pre-Med, Bus Admin, Commun, Crim Justice, Education, Eng, Environ Sci, Financial Mgt, Health Sci, Healthcare Admin, History/Pre-Law, Mgmt,Marketing, Music, Political Sci, Psych, Public History, Radio & TV, Secondary Ed, Social Media & Emergent Tech, Spec Ed, Sports & Leisure Mgmt, Sports Media, Student-Designed major	NCAA Div II	\$30,870 \$30,870 \$12,545 \$ 2,550	SAT/writing ACT 2.9 flexible	Rolling April 1 FAFSA
GOUCHER COLLEGE 1021 Dulaney Valley Road Baltimore, MD 21204 (410) 337-6100 admissions@goucher.edu; www.goucher.edu	Private 4 yr 1,500 Coed	Am Studies, Anthropology, Art, Bio Sciences, Chemistry, Communication & Media Studies, Computer Sci, Dance, Economics, Education, English, French, History, Managment, Music, Peace Studies, Philosophy & Religion, Physics, Political Science, Psych, Philosopy & Religion, Sociology, Theatre Management, Women's Studies	Div III	\$39,808 \$39,808 \$11,000 \$ 516	SAT/ACT optional 3.2	Nov 15 ed1, Dec 1 ea, Jan 15 ed2, Feb 1 reg Feb 1 FAFSA, Profile
GREEN MOUNTAIN COLLEGE 1 Brennan Circle, Poultney, VT 05764 1-800-776-6675 admiss@greenmtn.edu www.greenmtn.edu	Private 4 yr 650 Coed	Environmental Liberal Arts College-21 majors, 16 minors, Pre-Med/Pre-Vet Advising. Animal Care & Conservation, Wilderness & Outdoor Therapy, Renewable Energy & Ecological Design. <i>Honors program-greenmtn.edu/academics/undergraduate/honors-program. LD services-greenmtn.edu/academics/learning-resources</i>	NCAA Div III	\$35,560 \$35,560 \$11,722 \$ 1,442	Test optional 2.5	Rolling FAFSA
GUILFORD COLLEGE 5800 West Friendly Avenue Greensboro, NC 27410 (336) 316-2100 admission@guilford.edu; www.guilford.edu	Private 4 yr 1,200 Coed	Accounting, African & Afr Amer Stu, Art, Bio, Buiness Admin,Chem, Community & Justice Stu, Computing Tech & Info Sys, Creative Writing, Crim Justice, Cyber & Network Security, Exon, Edu Stu, Eng, Environ Stu, Exercise & Sport Sci, Forensic Accounting, Forensic Bio, French, Geology, German, Health Sci, History, Integrative Stu, Int'l Stu, Math, Music, Peace & Conflict Stu, Philos, Physics, Poli Sci, Psych, Religious Stu, Sustainable Food Systems.	NCAA Div III Old Dominion Athletic Conf	\$46,630 total	SAT/ACT optional 3.3 unweighted	Nov 1 ed, Dec 1 ea, Rolling Feb 15 FAFSA
HAMILTON COLLEGE 198 College Hill Road, Clinton, NY 13323 1-800-843-2655; (315) 859-4421 admission@hamilton.edu; www.hamilton.edu	Private 4 yr 1,850 Coed	Highly selective, liberal arts college offering 43 majors and 56 total areas of study. Most popular majors: Biology, Chinese, Economics, Government, Mathematics, Neuroscience, Psychology. Summer Research Programs, Internships, Domestic and International Study.	NCAA Div III	\$52,250 \$52,250 \$13,400 \$ 520	New SAT 1420- 1510; SAT 1430- 1540; ACT 32-34 85%, top 10%	Jan 1 reg; Nov 15 ed1; Jan 1 ed2 Feb 15 FAFSA

HERKIMER COLLEGE – SUNY 100 Reservoir Road, Herkimer, NY 13350 (315) 866-0300 x8278 admissions@herkimer.edu; www.herkimer.edu	Public 2 yr 3,600 Coed	40+ degree programs in Art, Business, Music & Media, Computer & Tech, Crim Just & Law, Educ, Healthcare & Service, Lib Arts & Sci. New: Forensic Investigations, Cybersecurity, Crime & Intell Analysis, Digital Filmmaking, Eng Sci, Mobile Applications Develop, Music Industry, Phys Therapy Assist, Quality Assurance. <i>Honors Program. LD-Academic Support Center available.</i>	NJCAA Div III	\$ 4,470 \$ 7,000 \$ 9,730 \$ 710	not required 68+	Rolling April 1 FAFSA, TAP
HARTWICK COLLEGE One Hartwick Drive, Oneonta, NY 13820-4020 1-888-HARTWICK; (607) 431-4150 admissions@hartwick.edu www.hartwick.edu	Private 4 yr 1,400 Coed	Accounting, Anthro, Art, Art Hist, BioChem, Bio, Busi Adm, Chem, Comp Sci, Econ, Edu Certif, Eng, Environ Chem, French, Geology, Hist, Math, Med Tech, Music, Music Ed, Nursing, Philos, Physics, Poli Sci, Psych, Religious Stu, Soc, Spanish, Theatre Arts, Progs: Pre-Law, -Allied Health, -Med, -Engineer. Co-op Progs: 4+1 Business/MBA, Engineer 3+2 & 4+2, Nursing Partnership, OT & PT MA/PhD. 3-year Bachelor's Prog. <i>Honors Prog- 3.5 GPA, 4 academic challenges w/in Arts & Humanities, Phys Lif Sci, Soc & Behavior Sci, and 1 individual challenge-tradition research or creative. LD Servs-accessibility servs. braselmanne@hartwick.edu, 607-431-4744</i>	Div III Div I men's soccer & women's waterpolo	\$43,312 \$43,312 \$13,315	1 SAT opt except for nursing B/B+	Rolling Feb 15 FAFSA
HIGH POINT UNIVERSITY One University Pkwy, High Point, NC 27268 1-800-345-6993; (336) 841-9216 admiss@highpoint.edu; www.highpoint.edu	Private 4 yr 4,500 Coed	50 majors, 58 minors, 13 graduate. Top majors: Biology, Business, Communications, Education, Interior Design, Psychology, Undecided. Earl N. Phillips School of Business, Commerce, Communication. New School of Health Sciences-Pharmacy, PA Medicine, Physical Therapy. <i>Honors Program-3.5 GPA. LD Services available.</i>	NCAA Div I	\$47,000 comprehensive fee except books	SAT 1208 r&em ACT 26 3.75 wt	Nov 1 ED, Nov 15 EA, March 15 reg FAFSA
HOBART & WILLIAM SMITH COLLEGES 629 South Main Street, Geneva, NY 14456 800-852-2256 admissions@hws.edu; www.hws.edu	Private 4 yr 2,400 Coed	Over 45 majors and programs based in the Liberal Arts. Education/Learning are interdisciplinary in approach. Individualized majors and joint degree progs. Diverse off-campus study programs and dedication to public service. "College with a Conscience" <i>Honors Program-available for each major. LD Services-Center for Teaching and Learning, resources for all students</i>	Div III all Div I men's lacrosse	\$52,345 \$52,345 \$13,525 \$ 1,180	test optional no min required 3.0+	Nov 15, early 1, Jan 15, early 2, Feb 1 reg same as above FAFSA, Profile
HOFSTRA UNIVERSITY 100 Hofstra University Hempstead, NY 11549 (516) 463-6700 admission@hofstra.edu www.hofstra.edu	Private 4 yr 6,913 Coed	Over 155 programs in the College of Liberal Arts & Sciences, Herbert School of Communication, Zarb School of Business, School of Education, School of Engineering, School of Health Professions & Human Services. <i>Honors College-enriching experience for academically accomplished students; LD-PALS Program-Office of Student Access Servs, barrier-free educational opportunities, assist in becoming self-advocating and independent learners.</i>	NCAA Div I	\$44,000 \$44,000 \$15,000 included	SAT / ACT test optional 90.5	Nov 15 ea I, Dec 15 ea II, Rolling Feb 15 preferred FAFSA
IONA COLLEGE 715 North Avenue, New Rochelle, NY 10801 1-800-231-IONA; (914) 633-2622 admissions@iona.edu; www.iona.edu	Private 4 yr 3,800 Coed	Majors include Business, Communication, Comp Sci, Crim Justice, Dramatic Arts, Education, Foreign Lang, Mathematics, Medical Tech, Pre-Dental, Pre-Med, Pre-Vet, Poli Sci, Sciences, Psychology, Soc Work, Speech, Teacher Cert. <i>Honors Program-challenging curriculum. LD-CAP, College Assistance Program for Students with LD and/or ADD.</i>	Div I	\$34,030 \$34,030 \$13,570 included	SAT I 1050- 1240, Mid 50% ACT 23 B+	Dec 1 ea, Feb 15 reg April 15 FAFSA, TAP
ISLAND DRAFTING & TECH. INSTITUTE 128 Broadway, Amityville, NY 11701-2704 (631) 691-8733 info@idti.edu; www.idti.edu	Private 2 yr 200 Coed	Computer-Aided Drafting & Design (Architectural or Mechanical), Electronic/Computer Technology	N/A	\$ 525 per credit R&B not available	75+	Rolling Rolling FAFSA, TAP interview

NASSAU COUNSELORS' ASSOCIATION – FALL 2017 COLLEGE EXPO – PAGE 24

Institution Address Phone E-mail Web Site	Public/Private 2 or 4 yr Enrollment Student Body	Undergraduate Majors or Schools & Colleges Honors Program LD Program/Services	Sports Division	Tuition: Instate: Out-of-state: Room & Board: Fees:	Tests Required Grade Point Average	Deadlines: Application Fin Aid Types of Fin Aid Forms
ITHACA COLLEGE 953 Danby Road, Ithaca, NY 14850 1-800-429-4274; (607) 274-3124 admission@ithaca.edu; www.ithaca.edu	Private 4 yr 6,200 Coed	Over 100 majors in Business, Communication, Health Sciences & Human Performance, Humanities & Sciences, Music <i>Honors Program-by invitation</i> <i>LD Support Services-available on individual basis</i>	Div III	\$41,776 \$41,776 \$14,990 included	SAT/ACT test optional 3.3-4.0; B+-A	Feb 1 reg Application Feb 1 FAFSA Nov 1 ed both application and CSS Profile
JOHNSON AND WALES UNIVERSITY 8 Abbott Park Place, Providence, RI 02903 1-800-DIAL-JWU www.jwu.edu	Private 2 yr / 4 yr 10,000 Coed	Culinary Arts, Hotel & Restaurant Mgmt, Creativ Advertising, Finance, Baking & Pastry Arts, Int'l Business, Crim Justice, Fashion & Retail, Graphic Des & Digital Media, Sports/Entertainment/Event Mgmt, Culinary Nutrition. New: Biology, Counseling Psychology. <i>Honors Program-maintain B or better, top 25%, SAT above national avg, ACT national avg. LD Services-Center for Academic Support 401-598-4689</i>	NCAA Div III	\$ 31,158 \$ 31,158 \$7,455-13,359 \$350 orientation	SAT/ACT recommended	Rolling Rolling FAFSA
JOHNSON COLLEGE 3427 North Main Avenue Scranton, PA 18508 (570) 702-8856 sgreaney@johnson.edu; www.johnson.edu	Private 2 yr 450 Coed	Architectural Drafting & Design, Automotive Tech, Biomedical Equipment Tech, Business Management, Carpentry & Cabinetmaking Technology, Computer Information, Diesel Truck Tech, Electrical Construction & Maintenance, Electronic Engineering Tech, HVAC, Advanced Manufacturing-Engineering Tech, Physical Therapist Assistant, Radiologic Tech, Welding Tech, Vet Tech,	N/A	\$ 16,942 \$ 16,942 \$ 9,880	SAT/ACT required for Radiologic & Vet Tech & Phys Therapy Asst & Merit Awards	1 week before start of classes on Aug 27
KING'S COLLEGE 133 North River Street, Wilkes-Barre, PA 18711 (570) 208-5858 admissions@kings.edu; www.kings.edu	Private 4 yr 2,400 Coed	36 majors, 8 pre-prof progs, Accounting, Bio, BioChem, Business Admin, Chem, Compu Sci, Crim Just, Educ, Eng, Engineering- Civil/Mechanical, Enviro Stu, Exercise Sci, Finance, HR Mgt, Commun, Math, Molecular Bio, Neurosci, Phys Asst, Poli Sci, Psych, Soc, Sports Med, Theater, Theology, 3+2 Engineer with Univ of Notre Dame. <i>Honors-Academically outstanding students participate in innovative discussion-centered courses. 1100 SAT min, 550 critical reading min, 1st quintile of graduating class. LD Prog-1st-Year Academic Studies Prog, (FASP)-structured, pro-active for success.</i>	NCAA Div III 25 teams	\$34,720 \$34,720 \$12,136	SAT/500 m 500 r avg, no writing ACT/22 avg 3.0	Dec 1 ea, Rolling March 1 Institutional Form, FAFSA
LA SALLE UNIVERSITY 1900 West Olney Avenue Philadelphia, PA 19141 (215) 951-1500 admiss@lasalle.edu; www.lasalle.edu	Private 4 yr 3,200 Coed	School of Arts and Science, School of Business, School of Nursing & Health Sciences. <i>Honors Program-"Honors Triple," a group of linked courses freshmen complete in 1st two semesters. Individual attention, special programming outside classroom, Honors-specific electives, priority housing, Approx. 10% of total student body. LD Services-tutoring, academic advising, classroom accomodations. A separate office, La Salle Autism and Developmental Disabilities Education Resources (LADDER).</i>	NCAA Div I	\$28,800 \$28,800 \$14,000	Test Optional New SAT 1080 ACT 21 3.0	Rolling Feb 15 priority FAFSA
LASELL COLLEGE 1844 Commonwealth Avenue Newton, MA 02466 (617) 243-2225 info@lasell.edu www.lasell.edu	Private 4 yr 1,700 Coed	Athletic Train, Business: Acct, Entrepreneurship, Finance, Int'l Busi, Mgmt, Mktg. Commun: Creative Advert, Entertain Media, Journal & Media Writing, Publ Relat, Radio & Video Prod, Sports Commun, Crim Just. Education: Curric & Instruc, Early Child Edu, Elem Ed, Second Ed, Eng, Hist, Exer Sci, Fashion: Fash Commun & Promo, Fash Des & Prod, Fash & Retail Merch, Fit Mgmt, Global Engage, Graph Des, Health Sci. Hospitality: Event Mgmt, Hosp Mgmt, Resort & Casino Mgmt. Info Tech: Cybersecur, Data Analytics, Law & Public Affairs, Legal Stu, Psych, Soc, Sprt Mgmt, Undeclared. <i>Honors Prog-to produce interdisciplinary thinkers & problemsolvers w/critical moral sensibility. LD Serv-Academic Achievement Ctr-fosters supportive learning environment, explores students academic potential & excel in chosen field of study.</i>	Div III	\$33,300 \$33,300 \$14,800	SAT 1080 ACT 21 composite test optional 3.1	Rolling, Nov 15 ea Priority/March 1 FAFSA

LAWRENCE TECHNOLOGICAL UNIVERSITY 21000 West Ten Mile Road Southfield, MI 48075 1-800-CALL-LTU; (248) 204-3160 admissions@ltu.edu; www.ltu.edu	Private 4 yr 4,000 Coed	Colleges of Architecture and Design, Arts & Sciences, Engineering, Management, and Arts & Science. <i>Honors Program</i>	NAIA	\$32,000 \$32,000 \$ 8,000 \$ 700	SAT / ACT 3.0	Rolling Rolling FAFSA
LAWRENCE UNIVERSITY 711 East Boldt Way, Appleton, WI 54911 (920) 832-6500 admissions@lawrence.edu; www.lawrence.edu	Private 4 yr 1,500 Coed	Anthropology, Art (Studio Art), Biology, BioChemistry, Business, Chemistry, Computer Science, Economics, English, Government, History, Music Education, Music Performance, Psychology, Secondary Education	Div III	\$45,801 \$45,801 \$ 9,032 \$ 300	<i>optional</i> SAT / ACT 3.55 <i>unweighted</i> 3.87 <i>weighted</i>	Rolling Feb 15 priority FAFSA
LE MOYNE COLLEGE 1419 Salt Springs Road Syracuse, NY 13214 (315) 445-4300; 800-333-4733 admission@lemoyne.edu; www.lemoyne.edu	Private 4 yr 2,500 Coed	Madder School of Business, College of Arts & Sciences, Purcell School of Professional Studies. <i>Integral Honors Program-small interactive classes, dynamic curriculum, engaging debates, Sr Honors Thesis; Academic Support Office-Roger Purdy. *First Year Advisement. LD Services-Accessibility & Disability Support.</i>	NCAA Div II	\$32,840 \$32,840 \$13,400 \$ 1,065	<i>test optional</i> SAT / ACT 90/solid B /B+	Nov 15 ea, Feb 1 Rolling, May 1 Nat'l Candidate Response Feb 1, FAFSA
LESLEY UNIVERSITY 29 Everett Street Cambridge, MA 02138 (617) 349-8800 admissions@lesley.edu www.lesley.edu	Private 4 yr 1,500 Coed	Animation, Art History, Art Therapy, Biology, Business Mgmt, Counseling, Creative Writing, Digital Filmmaking, Education, Earth & Environmental Science, Fine Arts, Graphic Design, Holistic Psych, Illustration, Photography, Poli Sci, Soc & Social Change. Five schools: College of Liberal Arts & Sciences (CLAS), College of Art & Design (LUCAD), Graduate School of Art & Design, Grad School of Arts & Social Sciences, Grad School of Education. <i>Honors Program-Accelerated Bachelor/Master's dual degree. LD Services available</i>	Div III	\$25,500 \$25,500 \$15,300 \$ 1,825	SAT / ACT 3.4	Dec 1 ea, Feb 15 Rolling Feb 1 FAFSA
LIM COLLEGE 12 East 53rd Street, New York, NY 10022 1-800-677-1323; (212) 752-1530 admissions@limcollege.edu www.limcollege.edu	Private 4 yr 1,521 Coed	Fashion Merchandising, Visual Merchandising, Marketing, Management. New majors: International Business, Fashion Media <i>Fashion Scholars Program (Honors)-at least 1150 SAT and 90 GPA</i>	N / A	\$25,575 \$25,575 \$16,350 \$ 820	SAT 880-1020 ACT 19-24 85/3.0	Rolling July 15 Institutional Form, FAFSA
LONG ISLAND UNIVERSITY LIU BROOKLYN LIU POST 1 University Plaza, Brooklyn, NY 11201 720 Northern Blvd., Brookville, NY 11548 1-800-LIU-PLAN; (516) 299-2900 post-enroll@liu.edu; www.liu.edu	Private 4 yr 4,000 each campus Coed	250+ majors offered Schools of: Business, Liberal Arts, Education. College of Health Professions & Nursing, College of Arts, Communication & Design. New: Fashion Merchandising, Equine minor, Financial Engineering minor, Nursing (4 yr BSN program). <i>Honors Program-traditional liberal arts foundation for qualified students. LD-Office of Disability Support Services provides assistance; Academic Resource Program teaches skills & strategies.</i>	NCAA <i>Post</i> Div II <i>Brooklyn</i> Div I	\$34,352 \$34,352 \$13,138 \$ 1,804	SAT / ACT Post required Brooklyn test optional 3.0	Dec 1 ea, Rolling reg Feb 15 FAFSA
LYME ACADEMY COLLEGE OF FINE ARTS 84 Lyme Street, Old Lyme, CT 06371 860-434-3571 admissions@lymefs.newhaven.edu www.lymeacademy.edu	Private 4 yr 200 Coed	Majors in Drawing, Painting, Sculpture, Illustration. Minor in Art History. Students can also take courses at the University of New Haven.	Div II through Univ of New Haven	\$30,496 \$30,496 \$ 7,300 \$ 1,726	SAT / ACT 2.4/4.0 no min	Rolling Rolling academic & merit scholar- ships

NASSAU COUNSELORS' ASSOCIATION – FALL 2017 COLLEGE EXPO – PAGE 26

Institution Address Phone E-mail Web Site	Public/Private 2 or 4 year Enrollment Student Body	Undergraduate Majors or Schools & Colleges Honors Program LD Program/Services	Sports Division	Tuition: Instate: Out-of-state: Room & Board: Fees:	Tests Required Grade Point Average	Deadlines: Application Fin Aid Types of Fin Aid Forms
LYNN UNIVERSITY 3601 N. Military Trail, Boca Raton, FL 33431 1-800-888-LYNN; (561) 237-7900 admission@lynn.edu; www.lynn.edu	Private 4 yr 2,700 Coed	College of Arts & Science, College of Business & Management, College of Education, College of International Communication, Conservatory of Music, Institute for Achievement & Learning (LD), Center for Learning Abroad	NCAA Div II	\$35,260 \$35,260 \$11,940 \$ 2,250	SAT 1,000 cr & m ACT 22 test optional 3.07%	Nov 15 ea, Mar 1 reg FAFSA
MAINE MARITIME ACADEMY 1 Pleasant Street, Castine, ME 04420 800-464-6565, (207) 326-2207 admissions@mma.edu; www.mainemaritime.edu	Public 2 yr, 4 yr 950 Coed	Programs in engineering, management, arts & science, business & logistics, ocean studies and marine transportation. Hands-on education, international sea-time aboard the training ship <i>State of Maine</i> or the schooner <i>Bowdoin</i> , cadet shipping aboard commercial vessels, & cooperative education assignments.	NCAA Div III East Coll Athl Conf	\$10,050 \$23,130 \$10,030 \$3,028-10,528	SAT / ACT 	Nov 30 ea, March 1 reg FAFSA
MANHATTAN COLLEGE 4513 Manhattan College Pkwy Riverdale, NY 10471 (718) 862-7200 admit@manhattan.edu; www.manhattan.edu	Private 4 yr 3,400 Coed	100 majors and programs in the School of Liberal Arts, School of Science, School of Business, School of Engineering, School of Education & Health, School of Continuing and Professional Studies	Div I	\$38,200 \$38,200 \$15,600 \$ 1,500	SAT 1100 ACT 24 A-	Rolling March 15 FAFSA, TAP
MANHATTANVILLE COLLEGE 2900 Purchase Street Purchase, NY 10577 (914) 323-5464 admissions@mville.edu www.manhattanville.edu	Private 4 yr 1,800 Coed	Account, Am Stu, Art Hist, Art Studio, Asian Stu, Biochem, Bio, Chem, Classics, Communi, Comp Sci, Dance, Dance Thera, Digital Media Production, Econ, Ed, Eng, Finance, French, History, Int'l Bus Mgmt, Int'l Studies, Mktng, Mgmt, Math, Music, Music Mgmt, Mistic Theatre, Theatre, Perform Arts, Philosophy, Poli Sci, Pre-Med, -Law, Psych, Soc, Spanish, Sports Stu, World Religions; five-year Master's in Teaching, Pre-Phys Therapy. <i>Honors Program-good academic and social standing at Manhattanville. LD Program-helps students meet their academic challenges</i>	Div III	\$36,460 \$36,460 \$14,520 \$ 1,320	SAT 1100 ACT 23+ test optional 3.1	Rolling March 1 preferred, Dec 1 ea FAFSA, music, dance/theatre audi- tions, art portfolio screenings
MARYMOUNT MANHATTAN COLLEGE 221 East 71st Street, New York, NY 10021 1-800-MARYMOUNT; (212) 517-0430 admissions@mmm.edu www.mmm.edu	Private 4 yr 2,000 Coed	Acting, Art, Biology, Business Management, Communication Arts, Dance, Eng, History, Humanities, Int'l Studies, Philosophy and Religious Studies, Poli Sci, Psych, Sociology, Speech Pathology & Audiology, Theatre Arts <i>LD Program-Academic Access: individual tutoring, academic advisement and counseling, personal coaching, technical support, assistive software, HEOP</i>	N/A	\$25,688 \$25,688 \$14,228	SAT / ACT 3.15	Rolling March 15 FAFSA
MARYMOUNT UNIVERSITY 2807 North Glebe Road, Arlington, VA 22207 (703) 522-5600; admis@marymount.edu www.marymount.edu	Private 4 yr 2,400 Coed	Offers over 40 majors in 4 schools: Arts & Sciences, Business Administration, Education & Human Services, and Health Professions. Top majors: Nursing, Fashion Design, Fashion Merchandising, Interior Design, Education <i>Honors Program available & selective (SAT/ACT required). LD Services available</i>	Div III	\$28,730 \$28,730 \$12,220	SAT / ACT required if GPA is under 3.0 3.2	Rolling March 1 priority FAFSA
MARYWOOD UNIVERSITY 2300 Adams Avenue, Scranton, PA 18509 1-86-MARYWOOD or (570) 348-6234 yourfuture@marywood.edu www.marywood.edu; www.mymarywood.com	Private 4 yr 3,100 Coed	Architecture, Art, Aviation, Business & Managerial Science, Communication Arts, Communication Sciences & Disorders, Criminal Justice, Education, English, Foreign Languages, Health and Physical Education, Mathematical Sciences, Music, Nursing, Nutrition & Dietetics, Philosophy, Physician Assistant, Psychology, Religious Studies, Science, Social Sciences, Special Education	NCAA Div III	\$30,069 \$30,069 \$13,900 \$ 1,175	SAT / ACT 3.0	Rolling Feb 15 FAFSA

MOLLOY COLLEGE 1000 Hempstead Avenue, PO Box 5002 Rockville Centre, NY 11571-5002 (516) 323-4000 admissions@molloy.edu www.molloy.edu	Private 4 yr 4,100 Coed	Allied Health, Accounting, Art, Bio, Business Mgmt, Comm Arts, Crim Just, Edu, Engl, Environ Studies, History, Math, Music, Music Ther, Nursing, Philos, Psych, Poli Sci, Soc Work, Sociology, Spanish, Speech Lang, Path/ Audio, Theatre Arts, Theol. <i>Honors Program-provides a solid grounding in the liberal arts for a select group of academically gifted students. Academic Support Services-development of academic skills and writing skills; accommodations made for disabilities or special needs</i>	Div II	\$29,110 \$29,110 12,790	SAT 1030 80	Rolling Rolling FAFSA, TAP
MONMOUTH UNIVERSITY 400 Cedar Ave, West Long Branch, NJ 07764 1-800-543-9671; (732) 571-3456 admission@monmouth.edu www.monmouth.edu	Private 4 yr 4,000 Coed	Schools of Science, Business; Education; Humanities & Social Science; Graduate School. Unique majors: Marine & Environmental Biology & Policy, Software Engineering, Music/Music Industry, Criminal Justice/Forensic Investigation, Health Science, Real Estate <i>Honors School-requirements 1800 SAT, 3.5 GPA</i>	Div I	\$36,733 \$36,733 \$13,401	SAT 3 section 1390-1680, redesigned 1020- 1210, ACT 20-25 3.03-3.25	Dec 1 March 1 Reg FAFSA
MOUNT SAINT MARY COLLEGE 330 Powell Avenue, Newburgh, NY 12550 1-888-YES-MSMC admissions@msmc.edu www.msmc.edu	Private 4 yr 2,500 Coed	Account, Actuarial Sci/Math, Bio, Bus Mgmt/Admin, Chem, Comm Arts/Media Stu, Criminology, Edu, Eng, Hispanic Stu, Hist/Poli Sci, Human Servs, Computer Info Tech, Interdis Stu, Int'l Studies, Math, Nursing, Physician Asst, Phys Therapy, Podiatry/Bio, Pre-Dent, -Law, -Med, & -Vet Med, Psych, Public Relat, Publishing/Eng or Media Stu, Soc Sci, Sociology, Sport Mgmt. BA/MSW in Soc Work/Human Servs, Soc Work/Psych, Psych/Counsel & Soc Work/Soc	Div III	\$28,891 \$28,891 \$14,527 \$ 1,680	SAT/ACT 84+	Rolling Rolling FAFSA, MSMC form
MOUNT ST. MARY'S UNIVERSITY 16300 Old Emmitsburg Road Emmitsburg, MD 21727-7799 1-800-448-4347 admissions@msmary.edu; www.msmary.edu	Private 4 yr 1,650 Coed	Nationally acclaimed Core curriculum. 40+ majors, top three are Business, Education and the Sciences. New majors: Cybersecurity, PPE (Philosophy, Political Science and Economics). <i>Honors program available. LD services through Borders Learning Services</i>	NCAA Div I	\$39,000 \$39,000 \$14,000 \$ 1,300	SAT/ACT 3.4	March 1 FAFSA
NASSAU COMMUNITY COLLEGE 1 Education Drive Garden City, NY 11530 (516) 572-7346; www.sunynassau.edu	Public 2 yr 23,000 Coed	Associate degrees in Arts, Sci & Applied Sci in more than 60 areas of study: Accounting & Bus, Comp Sci, Engineer & Techs, Communication, Mktg & Fashion, Allied Health Sci, Office Tech & Records Mgt, & Gen Lib Arts & Sci. One year certificate program available in selected study areas. <i>Honors Program, LD support services</i>	Jr. Level	\$2,434 sem \$203/credit	Open HS diploma GED	August Rolling FAFSA, TAP
NAZARETH COLLEGE 4245 East Avenue Rochester, NY 14618 (585) 389-2860 admissions@naz.edu; www.naz.edu	Private 4 yr 2,000 Coed	Bachelor of Arts, Science and Music degrees. Programs in Education, Speech Pathology, Phys Therapy, Soc Work, Business, Psych, & Fine Arts <i>Honors Program-distinguished lecturers; students & professors work on research, writing and publicly defending a senior thesis</i> <i>LD-Academic Center, Stephanie Smyth, Director-Office for Students with Disabilities</i>	Div III	\$26,000 \$26,000 \$11,000 \$ 1,300	SAT/ACT optional 89/3.4	Feb 15 Feb 15 FAFSA, Nazareth form
NEW JERSEY INSTITUTE OF TECHNOLOGY 323 Dr. M.L. King Blvd-Admissions Newark, NJ 07102-1982 (973) 596-3300 admissions@njit.edu; www.njit.edu	Public 4 yr Coed	Newark College of Engineering, College of Computer Science, College of Science & Liberal Arts, College of Architecture & Design, School of Management <i>Albert Dorman Honors College</i>	NCAA	\$10,500 \$19,960 \$ 9,626	SAT 1140 cr/m	Rolling March 15 FAFSA

NASSAU COUNSELORS' ASSOCIATION – FALL 2017 COLLEGE EXPO – PAGE 28

Institution Address Phone E-mail Web Site	Public/Private 2 or 4 year Enrollment Student Body	Undergraduate Majors or Schools & Colleges Honors Program LD Program/Services	Sports Division	Tuition: Instate: Out-of-state: Room & Board: Fees:	Tests Required Grade Point Average	Deadlines: Application Fin Aid Types of Fin Aid Forms
NEW YORK FILM ACADEMY 17 Battery Place, New York NY 10004 (212) 674-4300 film@nyfa.edu, www.nyfa.edu	Private 4 yr 5,000 Coed	BFA in Filmmaking, Acting for Film, Producing, Screenwriting, Animation, Photography, Game Design, Graphic Design, Conservatory programs: all above majors plus Cinematography, Documentary Filmmaking, Broadcast Journalism, Musical Theatre	Club Sports	\$11,200- 14,900 sem \$13,000- 18,000 sem	SAT / ACT no score requirement or strict GPA req	Rolling Rolling FAFSA, talent & need-based
NEW YORK INSTITUTE OF TECHNOLOGY PO Box 8000, Old Westbury, NY 11568 1855 Broadway, New York, NY 10023 (516) 686-7520; www.nyit.edu	Private 4 yr 13,000 Coed	Over 90 majors in six schools: Architecture and Design, Arts & Sciences, Education, Engineering & Computer Sciences, Health Professions, Management, NY College of Osteopathic Medicine (NYCOM). Most popular programs are Architecture, Engineering, Communication Arts and Graphic Design, and the Health Professions. <i>LD Program</i>	Div II all Div I men's baseball	\$28,020 \$28,020 \$14,100 \$920-1,620	SAT / ACT 80+	Rolling March 1 FAFSA
NEWBURY COLLEGE 129 Fisher Avenue, Brookline, MA 02445 (617) 730-7000 admissions@newbury.edu www.newbury.edu	Private 4 yr 800 Coed	Accounting, Business, Communication, Criminal Just, Computer Sci, Culinary & Hospitality, Cybersecurity, Digital Communication Des, Fashion Merch, Graphic Des, Interior Des, Mktng, Psych, Sport Mgmt. Schools of: Arts & Sciences, Culinary Studies, Applied Science & Human Services and Roger A. Saunders School of Busines & Hospitality Mgmt. <i>Honors Program-by invitation. LD-Academic Service Center. AEP program, individual counseling.</i>	NCAA Div III	\$34,645 \$34,645 \$14,500 \$500 culinary uniform fee	Test optional 2.5	Rolling FAFSA
NICHOLS COLLEGE Box 5000 Center Road Dudley, MA 01571 1-800-470-3379; (508) 213-2373 admissions@nichols.edu www.nichols.edu	Private 4 yr 1,400 Coed	BS-Business Admin, BA degrees Bus Concentrations, Sport Mgt, Accounting, Business Com, Crim Just Mgt, Econ, Entrepreneurship/Small Busi Mgt, Enviro Mgt, Retail Mgt, Finance, Gen Bus, Mgt, Hospitality Mgt, Int'l Bus, Mrkting, Math, Lib Arts: Eng, Psych, Hist, 4+1 BS/MBA offered. 1 of 10 grads is CEO, Pres. or owner of own company. 96% job placement within 6 months. 97% get financial aid, 94% get institutional grants/scholarships. <i>Honors Program invitation, 3.6 GPA, 1150+ SAT (v,m). LD Services-Special counseling/provisions available</i>	Div III new: m&w cross country, track/field, mens volley- ball for 18-19 season	\$33,000 \$33,000 \$12,600 \$ 300	SAT 1050 2.6-3.2	Dec 1 ea, Rolling March 1 priority FAFSA
NORTHERN VERMONT UNIVERSITY-LYNDON PO Box 919, Lyndonville, VT 05851 1-800-225-1998; (802) 626-6413 trevor.barski@lyndonstate.edu www.lyndonstate.edu	Public 4 yr 1,400 Coed	Atmospheric Science (Meteorology), Business, Climate Change Sci, Criminal Just, Elem & Secondary Educ, Electronic Journalism (Television Broadcasting), English, Game Design, Global Stu, Math, Mountain Recreation Mgmt, Music Business Industry, Natural Sci, New Media, Ski Resort Management, Sustainability Studies, Visual Arts (Graphic Design). <i>Honors Programs. LD Program-Project Excel, tutoring, counseling, academic development, learning specialist, Academic Support Center</i>	NCAA Div III	\$10,224 \$21,912 \$ 9,988 \$ 1,066		Rolling March 15 FAFSA
NOVA SOUTHEASTERN UNIVERSITY 3301 College Avenue Fort Lauderdale, FL 33314 (954) 262-8000 admissions@nova.edu www.nova.edu/undergrad	Private 4 yr 5,000 Coed	Account, Am Studies, Art, Art Admin, Athlet Train, Bio, Bio (pre-med), Busin Admin, Chem, Commun, Comp Engin, Comp Info Sys, Crim Just, Dance, Educ, Eng, Environ Sci, Finance, Hist, Humanities, Legal Stu, Marine Bio, Mktg, Music, Nursing, Pharm, Phys Therapy, Phys Asst, Psych, Sport & Rec Mgmt, Theatre, MA in Writing, Law School, Med School, Oceanographic Center. Dual Admissions for professional progs. <i>Honors Programs. LD-Student Disability Servs</i>	NCAA Div II	\$27,968 \$27,968 \$10,580 \$ 750	SAT 1000 ACT 22 3.0	July 20 FAFSA

NYACK COLLEGE 1 South Blvd., Nyack, NY 10960 2 Washington Street, New York, NY 10004 (646) 378-6101; admissions.nyc@nyack.edu www.nyack.edu	Private 4 yr 1,800 Coed	Christian college offering liberal arts and faith-based majors: Accounting, Bible & Theological Studies, Biology, Business Admin, Computer Science, Criminal Justice, Education, English, Healthcare Mgmt, History, Music Educ, Nursing, Organizational Mgmt, Pastoral Ministry, Philosophy & Religious Stu, Psychology, Social Work, Soc, Voice, Youth & Family Studies. <i>Honors Program</i>	NCAA Div II	\$25,000 \$25,000 <i>R&B only at Rockland Campus</i>	SAT 1000/1600 2.0+	Rolling Rolling FAFSA, TAP, Pell, HEOP
PACE UNIVERSITY 1 Pace Plaza, New York, NY 10038 861 Bedford Road, Pleasantville, NY 10570 (212) 346-1323; (914) 773-3746 ugnyc@pace.edu; www.pace.edu	Private 4 yr 13,000 Coed	105 undergraduate majors in Lubin School of Business, Seidenberg School of Computer Science & Information Systems, College of Health Professions; Dyson College of Arts & Sciences, School of Education, Law School. <i>Pforzheimer Honors College-invitational, all majors, study with distinguished faculty, close mentoring with peers and advisors, earn an annual Honors scholarship. LD-Office of Disability Servs.</i>	Div II	\$42,354 \$42,354 \$18,540	SAT 1150 ACT 24 88	Nov 1 ed & ea1, Dec 1 ea2 Rolling Feb 15 FAFSA
PENNSYLVANIA STATE UNIVERSITY 212 Shields Bldg University Park, PA 16804 (814) 865-5471; admissions@psu.edu	Public 4 yr 49,000 Coed	More than 160 majors, 12 academic colleges. Accelerated seven-year Pre-Med Programs, Study Abroad (200 programs/50 countries). Visit admissions.psu.edu/academics/majors/requirements. <i>Schreyer Honors College-admissions.psu.edu/academics/colleges/schreyer. LD program-equity.psu.edu/ods/dcl</i>	Div I-Univ Park Campus all others Div III	\$17,514 \$31,436 \$12,996	SAT 1750-1990 ACT 26-30 3.52-3.97	Nov 30 Feb 15 FAFSA
QUINNIPIAC UNIVERSITY 275 Mount Carmel Avenue Hamden, CT 06518 1-800-462-1944; (203) 281-8600 beaton@quinnipiac.edu www.quinnipiac.edu	Private 4 yr 7,000 Coed	Accounting, Bio, Business, Busi Info Sys, Communications, Comp Sci, Crim Just Econ, Eng, Finance, Gerontology, Health Mgmt, Health Sci, Hist, Lib Arts, Mkting, Math, Nursing, Occu Therapy, Phys Therapy, Phys Asst, Poli Sci, Psych, Public Relations, Soc Servs, Soc, Spanish, Vet Tech. Master's of Art-Teaching (Elem, Middle, Second), Comp Info Sys, Digital Design. Medical School. Dr of Nursing Practice offered. <i>Honors Program-Lib Arts classes. Academic credentials, invitation only based on SAT 1250+ & class rank top 5%. LD services-Meet admissions requirements. We certify other colleges & universities to tutor (1 of only 9 in country to do that).</i>	Div I	\$39,330 \$39,330 \$14,250 included	SAT / ACT 3.0	Rolling, PT, OT & Phys Asst Dec 31 March 1 Institutional, Free Form only
RENSSELAER POLYTECHNIC INSTITUTE Admissions Office, Troy, NY 12180-3590 (518) 276-6216 admissions@rpi.edu; www.rpi.edu	Private 4 yr 5,148-Troy Coed	Architecture, Engineering, Management, Science, Humanities and Social Sciences, 7-year accelerated programs in Medicine, 6-year accelerated program in Law. <i>LD Services-individual assistance through Disability Services Office</i>	Div III Div I hockey	\$49,520 \$49,520 \$14,630 \$ 2,817 \$1,550 laptop	SAT I / ACT regular programs SAT I & II accel programs A- / B+	Nov 1 ed, Dec 15 ed2, Jan 15 reg Nov 1 accel Feb 15 FAFSA, Profile
RIDER UNIVERSITY 2083 Lawrenceville Road Lawrenceville, NJ 08648 1-800-257-9026 admissions@rider.edu; www.rider.edu	Private 4 yr 3,700 Coed	Liberal Arts and Sciences; Education; Business; Westminster College of the Arts; College of Continuing Studies <i>Baccalaureate Honors Program, Business Honors Program LD Services Available</i>	NCAA Div I	\$39,080 \$39,080 \$14,270 \$ 1,015	SAT / ACT TOEFL 3.3 / B / B+	Nov 15 ea, Jan 1 Music Theatre Jan 15 scholarship, Feb 15 FAFSA
ROANOKE COLLEGE 221 College Lane, Salem, VA 24153 (540) 375-2270 admissions@roanoke.edu; www.roanoke.edu	Private 4 yr 2,100 Coed	36 majors, 32 minors, 23 concentrations, and 9 pre-professional programs in Medicine, Dentistry, Engineering, Law, Ministry, Physical Therapy, Veterinary. <i>Honors Program-Highly competitive, extensive research opportunities, community service opportunities. LD Services-contact the Disability Support Services Office</i>	Div III	\$36,688 \$36,688 \$13,413	SAT / ACT 3.4	March 15 March 1 FAFSA

NASSAU COUNSELORS' ASSOCIATION – FALL 2017 COLLEGE EXPO – PAGE 30

Institution Address Phone E-mail Web Site	Public/Private 2 or 4 year Enrollment Student Body	Undergraduate Majors or Schools & Colleges Honors Program LD Program/Services	Sports Division	Tuition: Instate: Out-of-state: Room & Board: Fees:	Tests Required Grade Point Average	Deadlines: Application Fin Aid Types of Fin Aid Forms
ROCHESTER INSTITUTE OF TECHNOLOGY 60 Lomb Memorial Drive, Rochester, NY 14623 (585) 475-6631 admissions@rit.edu; www.rit.edu	Private 4 yr 19,106 Coed	9 Colleges offer over 90 bachelor's degree programs in Art & Design, Business, Engineering, Science & Math, Liberal Arts, Photography, Environ Studies, Hospitality, Compu Sci, Info Tech, Health Sci and more. <i>Honors Programs-invitation only, top 5% admitted to each college, over 20 dual degree programs BS/MS, BS/ME, BS/MBA, study abroad & co-op education. LD Services-Student Supportive Services, SPECTRUM, TRiO and more. academic support and disability services provide wide variety of accommodations</i>	Div III Div I ice hockey	\$39,506 \$39,506 \$12,666 \$ 562	SAT/ACT 85	Nov 15 ed, Jan 15 reg Early Jan Priority March 1 FAFSA
ROGER WILLIAMS UNIVERSITY 1 Old Ferry Rd, Bristol, RI 02809-9978 (401) 254-3500 admit@rwu.edu; www.rwu.edu	Private 4 yr 4,100 Coed	School of the Humanities, Arts and Education, School of Social & Natural Sciences, School of Architecture, Art & Historic Preservation; School of Engineering, Computing & Construction Mgmt, Gabelli School of Business, School of Justice Studies. Unique majors: Architecture, Marine Biology, Construction Mgmt, Security Assurance Studies. <i>Honors Program-Incoming students w/HS GPA 3.5 invited to apply. LD-Student Accessibility Services: provide equal access to facilities, educational & co-curricular programs, campus activities & employment opportunities. Academic Development Ctr</i>	NCAA Div III	\$31,152 \$31,152 \$13,690 \$ 1,642	SAT 1140/1600 ACT 24 <i>test optional</i> 3.2/4.0	Nov 15 ea, Feb 1 reg Jan 1, Profile Feb 1, FAFSA
SACRED HEART UNIVERSITY 5151 Park Ave, Fairfield, CT 06825 (203) 371-7880 enroll@sacredheart.edu www.sacredheart.edu	Private 4 yr 4,200 Coed	Accounting, Art, Athletic Training, Bio, Business, Chem, Biochem, Comm & Tech Studies, Comp Sci, Crim Just, Econ, Edu, Exer Sci, Finance, Hist, Info Tech, Math, Media Studies, Nursing, Occ Therapy, Philos, Phys Ther, Poli Sci, Psych, Relig Studies, Spanish, Sports Mgmt, (Pre-Law, -Dental, -Med, -Opt, -Pharm, -Vet <i>Honors Program-GPA 3.7+, SAT 1250+ math + verbal, Top 10%</i>	Div I	\$35,043 \$35,043 \$13,625	SAT 500-650 v/m, optional 34	Dec 1 ed, Dec 15 ea, Feb 1 reg Feb 15 FAFSA, CSS Profile
SAGE COLLEGES (THE) 65 1st Street, Troy, NY 12180 140 New Scotland Ave, Albany, NY 12208 (518) 244-2217 admission@sage.edu; www.sage.edu	Private 4 yr 800 female Troy, 900 coed, Albany	Account, Bio, Business, Chem, Biochem, Creative Arts Ther, Educ, Eng/Modern Lang, Fine Arts, Forensic Sci, Graphic Des, Health Sci, History, Interior Des, Law & Society, Interdisciplinary Studies, Math & Comp Sci, Nursing, Nutrition, Occup Ther, Photography, Phys Ther, Psych, Public Affairs, Socio,Crim Just, Visual Arts, Writing. <i>Honors Program. LD Services-tutoring, alt test, instructional aids</i>	NCAA Div III	\$28,000 \$28,000 \$11,400	SAT optional 85+	Dec 1 ea1, Feb 1 Ea2, Rolling FAFSA
SAINT ANSELM COLLEGE 100 St. Anselm Drive Manchester, NH 03102 888-426-7356; (603) 641-7500 admission@anselm.edu www.anselm.edu	Private 4 yr Coed	32 majors, 21 certificate programs: Biology, Business Mgmt, Computer/Inform Educ, Engineering, Foreign Lang, Interdisciplinary Studies, Law, Liberal Arts, Mathematics, Nursing, Philosophy, Physical Sciences, Psychology, Social Sci, Theology, Visual and Performing Arts, New Hampshire Institute of Politics, Academic Resource Center. <i>Honors Prog-advanced courses, independent research projects, thesis development, collaboration with faculty advisors and fellow students. LD Services-Academic Resource Center: learning skills, instruction, writing, peer tutoring</i>	NCAA Div II	\$37,826 \$37,826 \$13,734 \$ 1,000	SAT/ACT <i>test optional unless Nursing essay</i>	Dec 1 ed, Nov 15 ea, Feb 1 reg FAFSA, Profile

SAINT BONAVENTURE UNIVERSITY PO Box D St. Bonaventure, NY 14778 1-800-462-5050; (716) 375-2400 admissions@sbu.edu www.sbu.edu	Private 4 yr 2,000 Coed	Accounting, Art Hist, Bio, BioChem, Business Info Sys, Chem, Child /Spec Ed, Comp Sci, Cybersecur, Elem Edu, Psych, Eng, Environ Studies, Finance, French, Hist, Health Sci, Phys Ed, Mktg, Mass Comm, Math, Mod & Class Lang, Music, Philos, Psych, Physics, Poli Sci, Prof & Creat Writing, Soc/Soc Sci, Spanish, Theology, Visual & Perform Arts; Women's Stu. 17 grad progs. Franciscan Health Care Professions; Dual admiss programs in Allopathic & Osteopathic Med, Dentistry & Pharm with LECOM & University of Buffalo. Physical Therapy with Daemen. <i>Honors Prog & Academic Honor Societies. LD-Teaching & Learning Center offers services on individual basis</i>	NCAA Div I Atlantic 10		SAT 1150 ACT 22 87-90	Rolling Feb 15 FAFSA
SAINT FRANCIS UNIVERSITY PO Box 600 Loretto, PA 15940-0600 1-866-342-5738; (814) 472-3100 admissions@francis.edu www.francis.edu	Private 4 yr 1,800 Coed	Account, Eco & Finance, Info Sys Mgmt, Mgmt, Mktg; Educ, Environmental Engineering, Med Tech, Nursing, Occup Ther, Phys Ther, Phy Asst, Podiatric Sci, Am Studies, Eng, French, Hist, Int'l Business, Philos, Relig Studies, Spanish, Fine Arts, Bio, Chem, Comp Sci, Engin, Math, Poli Sci, Psych, Soc, Soc Work, Pre-Profes <i>Honors Program-individualized advising, independant study, honors course notation on official transcript, and special honors diploma. LD-Academic Center for Enrichment</i>	Div I Div IAA football	\$32,244 \$32,244 \$11,524 \$ 1,100	SAT/ACT 3.0-3.5	Nov 15 PA, Jan 15 PT, OT Rolling all others March 1 FAFSA
ST. JOHN FISHER COLLEGE 3690 East Ave, Rochester, NY 14618 (585) 385-8064 admissions@sjfc.edu; www.sjfc.edu	Private 4 yr 2,700 Coed	35 academic majors in Business Management, Media & Commun, Computer Science, Criminology, Education, English, Health, Languages, Math, Philosophy, Physical Sciences, Pre-Law, Psychology, Social Sciences. <i>Honors Program-6 courses over 4 years. Honors/Science Scholar Program, First Generation Scholarship, Service Scholarship. LD Services-Joy Breeden jbreeden@sjfc.edu</i>	NCAA Div III	\$32,540 \$32,540 \$12,150	SAT I/ACT 85%	Rolling Jan 15 FAFSA
SAINT JOSEPH'S COLLEGE 155 West Roe Blvd. Patchogue, NY 11772-2399 (631) 687-4500 www.sjcny.edu	Private 4 yr 4,000 Coed	Accounting, Business Admin, Bio, Chem, Child Study /Spec Ed, Computer Info Sys, Criminal Just, Eng, Hist, Hosp & Tourism Mgmt, Human Relations, Med Tech, Journalism & New Media, Nursing, Psych, Recreation, Secondary Ed, Social Sci, Marketing, Math, Math/Comp Sci, Poli Sci, Religious Studies/Philos, Socio, Spanish, Studio Art and Speech Communication. <i>Honors Program-an enriched & rigorous academic experience for high-achieving students, by invitation. LD-Career Services Office provides reasonable accommodations on a case-by-case basis.</i>	NCAA Div III	\$24,500 \$24,500 N/A \$ 630	SAT-1020 com- bined/ACT/21 80 unweighted	Rolling Feb 25, Nov 1 FAFSA, TAP APTS
SAINT JOSEPH'S COLLEGE OF MAINE 278 Whites Bridge Road, Standish, ME 04084 800-338-7057 www.sjcme.edu	Private 4 yr 1,100 Coed	Biology, Business Admin, Chemistry, Communications, Crim Just, Education, Eng, Environmental Sci & Studies, Exercise Science, History, Liberal Studies, Marine Science, Mathematics, Nursing, Philosophy, Physical Education, Political Sci, Psych, Sociology, Sports Mgmt. <i>Honors Program-for core classes</i>	Divi III	\$27,700 \$27,700 \$11,000 \$ 1,000	SAT m& r 1000 ACT 22	Rolling, Nursing Jan 15 March 1 FAFSA, St. Jo's
SAINT JOSEPH'S UNIVERSITY 5600 City Avenue, Philadelphia, PA 19131 (610) 660-1300 www.sju.edu; admit@sju.edu	Private 4 yr 4,500 Coed	School of Business, College of Arts and Sciences. New majors: Food Marketing; 5-year Master program for Elementary Education and Psychology <i>Honors program-3.75 gpa, 1350 SAT LD Services-Student Support Office</i>	Div I	\$36,480 \$36,480 \$12,206	SAT/ACT 3.2-3.88 mid 50%	Nov 15 ea, Feb 1 reg Feb 15 FAFSA
SAINT LEO UNIVERSITY Admission-MC2008, PO Box 6665 St Leo, FL 33574-6665 1-800-334-5532; (352) 588-8283 admission@saintleo.edu; www.saintleo.edu	Priv/Catholic 4 yr 2,234 Coed	Accounting, Biol, Business Admin, Comp Info Sys, Communication Mgmt, Comp Sci, Crim Just, Economics, Eng, Global Stu, Health Care Mgmt, History, Mktg, Math, Poli Sci, Psych, Religion, Soc Work, Sociology, Sport Business. <i>Honors-3.5 GPA, SAT 1260, ACT 26, research opportunities, Study Abroad Partnership, Bridge Prog, ROTC. LD-Office of Disability Services 352-588-8464 or adaoffice@saintleo.edu. FIRSTS Program-first generation students</i>	NCAA Div II	\$20,760 \$20,760 \$10,210	SAT 1021 ACT 22 test optional 3.49	Rolling FAFSA

NASSAU COUNSELORS' ASSOCIATION – FALL 2017 COLLEGE EXPO – PAGE 32

Institution Address Phone E-mail Web Site	Public/Private 2 or 4 year Enrollment Student Body	Undergraduate Majors or Schools & Colleges Honors Program LD Program/Services	Sports Division	Tuition: Instate: Out-of-state: Room & Board: Fees:	Tests Required Grade Point Average	Deadlines: Application Fin Aid Types of Fin Aid Forms
SAINT THOMAS AQUINAS COLLEGE 125 Route 340 Sparkill, NY 10976 (845) 398-4100 admissions@stac.edu www.stac.edu	Private 4 yr 2,400 Coed	Over 100 majors, minor, and specializations in our Schools of Educ, Business, and Arts & Sciences, plus dual-degree prog in Phys Therapy, Podiatric Med, Chiropractic Med, Biomed Engin & Engin. Newest majors: Creative Writ, Exercise Sci, Hospitality Mgmt, Educational Studies and Art Educ (K-12). <i>Honors Program-1200+SAT's 3.6+ GPA, 70% tuition (dorm not included), Summer Abroad at Oxford Univ. LD Program: One-on-One mentoring sessions, study groups and workshops, academic counseling, course advisement, assorted priority registration, assistive technology, and summer prog. Fee for Pathways: \$3,700/yr. HEOP also offered.</i>	NCAA Div II	\$30,750 \$30,750 \$12,750 \$ 800	SATI/ACT 3.0, 2.0 transfer required	Rolling Rolling FAFSA
SETON HALL UNIVERSITY 400 So. Orange Ave., South Orange, NJ 07079 (973) 761-9000 thehall@shu.edu; www.shu.edu	Private 4 yr 6,000 Coed	Popular majors: Bio, Education, Communications, Computer Sci, Integrated Education, Special, Early Child, Elem Ed, Nursing, Physician's Asst, Poli Sci. College of Arts & Sci, College of Communications & the Arts, Stillman School of Business, School of Nursing, School of Diplomacy & Int'l Relations, School of Education. <i>Honors Program. LD Services</i>	Div I Big East	\$39,000 \$39,000 \$13,500 2,000	SAT 1220 ACT 25 3.5	Nov & Dec ea, March 1 reg Feb 1 FAFSA/TAP
SIENA COLLEGE 515 Loudon Rd, Loudonville, NY 12211-1642 (518) 783-2423 admissions@siena.edu www.siena.edu	Private 4 yr 3,200 Coed	Accounting (5yr MS), Am Studies, Bio, Biochem, Business, Chem, Classics, Comp Sci, Computational Sci, Creative Arts, Econo, Eng, Environ Stu, Finance, Health Stu/Health Sci, Hist, Mktg, Mgt, Math, Mod Lang, Nursing, Poli Sci, Philos, Physics, Psych, Relig Studies, Second Edu, Social Wk, Soc, Pre-PT, -OT, -PA and 4-3 Pre-Law Program. 8-yr combined pre-med prog/ Albany Med College. <i>Honors Program-89 GPA, 1150 SAT m/r. LD Services-test accomodations, tutors, writing center, reading assistance.</i>	Div I	\$35,311 \$35,311 \$14,105 \$ 530	test optional 89	Dec 1 ea, Feb 15 Regular Oct 1 Priority FAFSA
SOUTHERN CONNECTICUT STATE UNIVERSITY 131 Farnham Avenue, New Haven, CT 06515 (203) 392-5644; admissions@southernct.edu www.southernct.edu	Public 4 yr 11,000 Coed	Arts & Sciences, Business, Education (Special Ed, Elem Ed, Secondary Ed, Physical Ed), and School of Health and Human Services (Public Health, Social Work and Nursing) <i>Honors Program; LD support services through Disability Resource Center</i>	Div II	\$ 8,981 \$20,485 \$11,000	SAT/ACT 2.5+	Rolling March 14 FASFA
SPRINGFIELD COLLEGE 263 Alden Street, Springfield, MA 01109 800-343-1257; (413) 748-3136 admissions@springfieldcollege.edu www.springfieldcollege.edu	Private 4 yr 2,200 Coed	Applied Exercise Sci, Art, Athletic Training, Business Mgt, Communications, Sports Journalism, Comp & Info Sci, Crim Just, Dance, Edu, Emergency Med Services Mgt, Math, Phys Ed, Physician Asst, Psych, Sociology, Sports Biology, Sport Mgmt, Phys Therapy, Occu Therapy. <i>LD Services-Academic Success Center, Writing Center</i>	Div III	\$36,020 \$36,020 \$12,240	SAT 1100 ACT 23 3.0	Rolling March 15priority FAFSA, SC form

State University of New York – SUNY

UNIVERSITY AT ALBANY 1400 Washington Ave, Albany, NY 12222 (518) 442-5435 ugadmissions@albany.edu; www.albany.edu	Public 4 yr 13,000 Coed	Majors in areas of Science & Math, Social & Behavioral Sci, Humanities & Fine Arts, Business Admin, Comp Sci, Crim Just, Social Welfare, Public Admin & Political Sci, internships, 3+3 Law program with Albany Law School, Research opportunities. <i>Honors Program-Presidential Scholars, Honors College</i>	NCAA Div I	\$ 6,670 \$21,550 \$13,464 \$ 2,880	SAT 1140-1300 88-93	Rolling ASAP after Jan 1 FAFSA
BINGHAMTON UNIVERSITY PO Box 6001, Binghamton, NY 13902-6001 (607) 777-2171 admit@binghamton.edu www.admissions.binghamton.edu	Public 4 yr 13,362 Coed	Nearly 130 offerings in the Harpur College of Arts and Sciences, Decker School of Nursing, Watson School of Engineering & Applied Science, School of Management, and College of Community and Public Affairs. <i>Binghamton Scholars Program includes approx 110 freshmen each year who are in top 5% of freshman class. Honors available in most majors. LD program-visit ssd@binghamton.edu</i>	NCAA Div I	\$ 6,470 \$21,550 \$14,577 \$ 2,940	SAT mid 50% ACT 28-31 TOEFL 92-98, 3.4-3.9	Nov 1 ea, Jan 15 reg Feb 1 FAFSA
UNIVERSITY AT BUFFALO Office of Admissions, 12 Capen Hall Buffalo, NY 14260-1660 (716) 645-6900 ub-admissions@buffalo.edu; www.buffalo.edu	Public 4 yr 20,411 Coed	Over 100 undergraduate major options in College of Arts & Sciences, Schools of: Engineering & Applied Sciences, Public Health & Health Professions, Management, Medicine & Biomedical Sciences, Nursing, and Pharmacy & Pharmaceutical Sciences. Early Assurance 2+4 PharmD, 3+3 DPT Prog, 7 yr BS/DDS. <i>Honors College-scholarships for top students, advanced research opportunities. LD Program-Academics available for enriched learning experience</i>	NCAA Div I	\$ 6,770 \$24,010 \$12,477 \$ 3,252	SAT 1240, ACT 28 92	Nov 15 ea, Dec 15 scholarship, Feb 1 reg FAFSA, TAP, PELL
STONY BROOK UNIVERSITY Admissions Office Stony Brook, NY 11794-1901 (631) 632-6868 www.stonybrook.edu	Public 4 yr 24,103 Coed	Over 200 majors, minors & combined-degree programs in the Liberal Arts & Sci, Engineering & Applied Sciences & Health Sciences, as well as Business, Pre-Prof prep for Med, Vet Med, Dental, & Law. The Schl of Health Tech & Mgmt and the Schls of Nursing & Social Welfare offer degrees in Phys Ther, Med Tech, Resp Ther, Nursing, Phys Asst, Occup Ther, Nursing and Social Welfare. <i>Honors College-a small highly selective academic community promotes accredited academic and research opportunities. Women in Science & Engineering, University Scholars. special services are offered to advance intellectual curiosity. Scholarships and honor housing are available.</i>	Div I	\$ 6,470 \$17,810 \$11,000 \$ 1,944	SAT/1250 ACT/27 90 unweighted	Jan 15 March 1 FAFSA
ALFRED STATE COLLEGE 10 Upper College Drive, Alfred, NY 14802 1-800-4-ALFRED #1 admissions@alfredstate.edu www.alfredstate.edu	Public 2 yr / 4 yr 3,700 Coed	Over 52 Associate degrees, 20 Bachelor's degrees. Architectural Tech, Architecture, Arts & Sciences, Applied Tech, Agriculture, Business, Comp Sci, Digital Media & Animation, Engineering Tech, Forensics, Health, Info Tech, Mgmt, Nursing, Vet Tech. <i>Honors-application necessary, overall 3.25, honors project; LD Support Services-individual tutoring, note takers & scribes, taped texts, testing accommodations</i>	NCAA Div III	\$ 6,670 \$9,740 Assoc \$16,320 Bach \$12,250 R&B \$ 1,657	SAT I Bach 85 Bachelor 80 Associate	Rolling FAFSA, PELL, TAP
SUNY COLLEGE AT BROCKPORT 350 New Campus Dr., Brockport, NY 14420-2915 (585) 395-2751 admit@brockport.edu www.brockport.edu	Public 4 yr 7,100 Coed	Account, Afric-Am Stu, Anthro, Art-Studio, Athletic Training, Bio, BioChem, Busin Adm, Chem, Commun, Comp Info Sys, Comp Sci, Crim Just, Dance, Earth Sci, Edu, (Elem, Sec), Enviro & Forest Bio, Geol, Health Sci, Hist, Journal, Mktg, Math, Med Tech, Meteorol, Nursing, Phys Ed, Physics, Poli Sci, Psych, Recreation, Soc Work Sociology, Teach Certif, Theatre, Water Resources, Women's Studies. <i>Honors Program-enriched learning environment, full scholarship (freshmen only) Delta, Overseas Study. LD Services-extended time testing, note taking, assistive tech</i>	Div III	\$ 6,670 \$15,820 \$11,540 \$ 1,434	SAT 1040-1190 ACT 22-26 87-93	Rolling May 1 TAP, PELL, FAFSA

NASSAU COUNSELORS' ASSOCIATION – FALL 2017 COLLEGE EXPO – PAGE 34

Institution Address Phone E-mail Web Site	Public/Private 2 or 4 year Enrollment Student Body	Undergraduate Majors or Schools & Colleges Honors Program LD Program/Services	Sports Division	Tuition: Instate: Out-of-state: Room & Board: Fees:	Tests Required Grade Point Average	Deadlines: Application Fin Aid Types of Fin Aid Forms
SUNY BUFFALO STATE 1300 Elmwood Avenue, Buffalo, NY 14222 (716) 878-4017; admissions@buffalostate.edu www.buffalostate.edu	Public 4 yr 10,661 Coed	30 departments listing more than 1,000 courses. The most popular fields are Business, Communications, Design, Criminal Justice, Elem Economic/Finance, Education, Engineering Tech, Exceptional Edn, Unform Sys Mgmt, Industrial Technology, Psychology, Social Work	NCAA Div III	\$ 6,470 \$16,320 \$12,472 \$ 1,119	SAT /ACT 85 min	Rolling ASAP FAFSA
SUNY DELHI 454 Delhi Drive, Delhi, NY 13753 1-800-96DELHI; (607) 746-4550 enroll@delhi.edu; www.delhi.edu.	Public 2 yr/4 yr 3,500 Coed	Applied Technology, Architecture, Auto, Business, Culinary, Golf Course Operations, Hospitality, Lib Arts, Nursing, Plant Sciences, Refrigeration, Veterinary Science. 4 yr BBA degree programs in Hospitality, Golf Course Mgmt and Info Tech <i>Honors Program. LD Services-contact Office of Access and Equity Services</i>	USCAA Div III	\$ 6,670 \$ 8,160 \$11,980 \$1,670	SAT/ACT recommended C+	Rolling March 1 FAFSA, Profile
SUNY COLLEGE OF ENVIRONMENTAL SCIENCE AND FORESTRY 1 Forestry Drive, Syracuse, NY 13210 (315) 470-6600 esfinfo@esf.edu; www.esf.edu.	Public 4 yr 1,500 Coed	Aquatic & Fisheries Sci, Bioprocess Engineering, Biotech, Chem, Conserv Bio, Construct Mgmt, Envir Bio, Environ Ed Interpretation, Environ Health, Environ Sci, Environ Studies, Forest Ecosystems Sci, Forest Health, Forest Resource Mgmt, Forest Tech, Envir Engineering, Land Survey Tech, Landscape Arch, Nat'l Hist & Interpret, Nat'l Resources Mgmt, Paper Engin, Paper Sci, Sustain Energy Mgmt, Undeclared Option, Wildlife Sci, Environ & Nat'l Resources Conservation	Intramural	\$ 6,670 \$16,320 \$15,400 \$ 1,873	SAT/ACT 85	Nov 15 March 1 FAFSA
FARMINGDALE STATE COLLEGE 2350 Broadhollow Road Farmingdale, NY 11735-1021 (631) 420-2000; admissions@farmingdale.edu www.farmingdale.edu	Public 4 yr 7,600 Coed	Offers Bachelor and Associate degrees in Technologies, Business, Health or Arts and Sciences, including Aviation Admin, Nursing, Visual Communications, Comp Info Sys, Horticulture, Security Sys, Mfg Engineering Tech, Applied Math, Sports Mgmt <i>LD Services-Disability Services Center-Malka Edelman, Director, 631-420-2411</i>	NCAA Div III	\$6,470 \$15,820 \$15,510 \$ 1,254	SAT I/ACT 80+	Rolling April 15 FAFSA
FASHION INSTITUTE OF TECHNOLOGY – SUNY 7th Ave at 27th St, New York NY 10001-5992 (212) 217-3760 fitinfo@fitnyc.edu www.fitnyc.edu/admissions	Public 2 yr/4 yr 10,022 Coed	Accessories Design, Advert & Mktg Commun, Art Hist, Commun Des, Comp Animation, Entrepreneurship, Fashion Desi, Fashion Merch Mgt, Film & Media, Fine Arts, Graphic Des, Illustration, Interior Des, Int'l Trade & Mktg, Packaging Des, Photography, Jewelry Des, Menswear, Textile/Surface Des, Tech Des, Toy Des, Visual Presentation & Exhibition Des, Textile Development & Mktg, Production Mgt. <i>Presidential Scholars' Program. Disability Support Services FIT-ABLE-LD Program and Project THRIVE</i>	Div III	\$ 4,500 \$13,500 \$12,970	Class rank, avg, Student essay & personal state- ment, orig designs & art work	Jan 1 March 15 FAFSA
SUNY FREDONIA 178 Central Avenue, Fredonia, NY 14063 (716) 673-3251 admissions@fredonia.edu; www.fredonia.edu	Public 4 yr 5,200 Coed	Acting, Art, Bio, Business, Chem, Commun, Dance, Educ, Eng, Graphic Design, Hist, Journalism, Molecular Genetics, Music, Painting, Physics, Psych, Soc Work, Sound Recording Tech, Speech Pathol, Stage Production, Theatre, Pre-Dental, -Law, -Med. <i>Honors Program-register 1st all 4 years, smaller liberal arts classes. LD Services-tutors, study skills, note takers, extended test time, contact Learning Center</i>	NCAA Div III	\$ 6,470 \$15,820 \$11,620 \$ 1,530	SAT 1110 cr&m ACT 24 90/3.5	Rolling FAFSA

MORRISVILLE STATE COLLEGE – SUNY PO Box 901, Morrisville, NY 13408 (315) 684-6046; admissions@morrisville.edu www.morrisville.edu	Public 2 yr / 4 yr 3,100 Coed	Over 80 majors and degree programs including Agriculture Sciences, Applied Psychology, Automotive Technology, Business, Administration, Criminal Justice, Information Technology, Renewable Energy, Sports Nutrition / Human Performance, Nursing-AAS. <i>LD Program-Academic Support Center provides free tutoring and special program</i>	NCAA Div III	\$ 6,470 \$11,000 AS \$16,320 BA \$ 13,238 \$ 1,531	SAT required all Bachelor degrees varies by major	Rolling May 1 FAFSA
SUNY NEW PALTZ 100 Hawk Drive, New Paltz, NY 12561 (845) 257-3200 admissions@newpaltz.edu www.newpaltz.edu	Public 4 yr 6,717 Coed	Nearly 100 undergraduate programs offered in the School of Liberal Arts and Sciences, School of Business, School of Fine & Performing Arts, School of Education, School of Science & Engineering. 7 year Medical Program and 7 year Optometry Program. <i>Honors Program. Disability Resource Center available</i>	NCAA Div III	\$ 6,670 \$17,232 \$12,880 \$ 1,305	new SAT 1140-1270 89.5-94.4	Nov 15 ea, May 1 reg March 15 FAFSA
SUNY OLD WESTBURY PO Box 307, Old Westbury, NY 11568 (516) 876-3073 enroll@oldwestbury.edu www.oldwestbury.edu	Public 4 yr 4,150 Coed	Accounting, Am Studies, Bio, Busi Mgmt, Chem, Comp Humanities, Comp Info, Criminology, English, Finance, Health & Society, Indus Labor Relations, Lang & Lit, MIS, Marketing, Math, Media & Commun, Politics, Philosophy & Religion, Psych, Soc, Spanish, Teacher Edu, Visual Arts, Eco & Law <i>LD Services-Residential Scholarship for Freshman</i>	Div III	\$ 6,470 \$15,820 \$10,120 \$ 1,054	SAT/1100 85	Rolling March 1/Nov 1 FAFSA, TAP
SUNY ONEONTA 116 Alumni Hall, Oneonta, NY 13820 (607) 436-2524 or 1-800-SUNY 123 admissions@oneonta.edu; www.oneonta.edu	Public 4 yr 5,800 Coed	Five schools-more than 70 academic programs that include Business, Criminal Justice, Dietetics, Education, Environmental Sustainability, Music Industry, Mass Communication Psychology and Fashion <i>LD Services-Testing & Classroom Assistance, Adaptive Technology</i>	Div III	\$ 6,670 \$16,320 \$12,386 \$ 1,462	SAT/1117 ACT/24 91	Nov 15 ea, Rolling after Jan 1 March/priority FAFSA
SUNY OSWEGO 229 Sheldon Hall, Oswego, NY 13126 (315) 312-2250 admiss@oswego.edu; www.oswego.edu	Public 4 yr 6,800 Coed	110 degree programs including majors in the Liberal Arts, Sciences, and such career-oriented programs as Accounting, Business Administration, Marketing, Journalism, Computer Science, Communications, and Education. <i>Honors Program-available in any major, www.oswego.edu/academics/opportunities/honors/program. LD Services-accommodations made according to IEPs or 504 plans. Tutoring for all students</i>	Div III	\$ 6,470 \$15,620 \$14,722	SAT v540/m540 ACT 23 87	April 1 FAFSA
SUNY PLATTSBURGH 101 Broad Street, Plattsburgh, NY 12901 1-888-673-0012; (518) 564-2040 admissions@plattsburgh.edu www.plattsburgh.edu	Public 4 yr 5,859 Coed	Over 60 majors in 3 academic divisions: Arts & Science (Environ Studies & Sci, Communication Studies, Psych, Criminal Just), School of Business & Economics (Accounting, Entrepreneurship, Hotel, Restaurant & Tourism Mgmt, Finance), Health, Educ & Human Servs (Nursing, Soc Work, Communication Disorders & Sciences, Fitness & Wellness Leadership). <i>Honors Program-by invitation, engages approx. 300 students in active learning & lively discussions. Student Support Services-assistance to physically challenged, documented LD or 1st generation attending college</i>	Div III	\$ 6,470 \$14,820 \$ 9,750 \$ 1,212	SAT/ACT B solid, college prep/regent's program	Rolling March 1 FAFSA, TAP
SUNY POLYTECHNIC INSTITUTE 100 Seymour Road Utica, NY 13502 (315) 792-7500 admissions@sunyit.edu www.sunypoly.edu	Public 4 yr 2,800 Coed	Offers 20 UG and 13 grad degree programs. Accounting, Applied Math, Bio, Business, Civil Engin Tech, Communication & Inform Design, Community & Behav Health, Computer Engin Tech, Electrical Engin, Comp & Info Sci, Electrical & Computer Engineering, Health Info Mgmt, & Mechan Engineering Tech, Interactive Media & Game Design, Nanoscale Sci, Network & Comp Security, Nursing, Psych, Sociology, Engineering (Mechanical, Civil, Nanoscale). <i>LD-Counseling Center provides individual accommodations by request</i>	NEAC NCAA Div III	\$ 6,670 \$16,320 \$12,068	HS or College transcript SAT/ACT Competitive	Rolling Rolling FAFSA

NASSAU COUNSELORS' ASSOCIATION – FALL 2017 COLLEGE EXPO – PAGE 36

Institution Address Phone E-mail Web Site	Public/Private 2 or 4 year Enrollment Student Body	Undergraduate Majors or Schools & Colleges Honors Program LD Program/Services	Sports Division	Tuition: Instate: Out-of-state: Room & Board: Fees:	Tests Required Grade Point Average	Deadlines: Application Fin Aid Types of Fin Aid Forms
SUNY POTSDAM 44 Pierrepont Avenue, Potsdam, NY 13676 1-877-POTSDAM admissions@potSDam.edu www.potsdam.edu	Public 4 yr 3,900 Coed	Anthro, Archeol, Art (BFA), Bio, BioChem, Business Admin, Business Econ, Chem, Commun, Community Health, Comp & Info Sci, Crim Just, Dance, Econ, Educ, Engin 3/2, Eng, Env Stu, Exercise Sci, French, Geo, Graphi Des & New Media, Hist, Int'l Stu, Math, Interdisc Stu, Music, Philos, Physics, Politics, Psych, Soc, Spanish, Theatre, Women's Gender Stu. <i>2/4 yr Honors program: 1st yr residential option-enriched academic experience, work /w faculty, own computer lab & lounge. LD-Office of Accommodative Servs-academic & physical accommodations</i>	NCAA Div III	\$ 6,470 \$16,320 \$12,055 \$ 1,415	SAT/ACT optional 88	Rolling Rolling FAFSA, TAP
PURCHASE COLLEGE 735 Anderson Hill Rd, Purchase, NY 10577 (914) 251-6300 admissions@purchase.edu; www.purchase.edu	Public 4 yr 4,200 Coed	Schools of: Liberal Arts & Sciences, Film & Media Studies, The Arts, Liberal Studies & Continuing Education. Unique majors: Arts Management, New Media, Latin American Studies, Playwriting & Screenwriting, Gender Studies, Communications, Environmental Studies. <i>Honors Program-Learning Communities. LD programs and services available.</i>		\$ 6,670 \$16,320 \$12,952 \$ 1,797	SAT 1170 r/m ACT 24 3.0	March 1 but it varies FAFSA
SUFFOLK COUNTY COMMUNITY COLLEGE – SUNY 533 College Road Selden, NY 11784 (631) 451-4000 admissions@sunysuffolk.edu www.sunysuffolk.edu	Public 2 yr 26,500 Coed	Accounting, Am Sign Lang, Business, Chem, Chem Dependency Counseling, Comp Sci, Construct Tech, CAD, Crim Justice, Dietetic Tech, Engineering Sci, Fine Arts, Fitness Spec, Graphic Desi, Health Info Techs, Hist, Horticulture, HVACR, Journalism, Lib Arts & Sci, Manuf Tech, Math, Nursing, OT Asst, Opticianry, Paralegal, Paramedic, Perform Arts, Photographic Imag, PT Asst, Physics, Poli Sci, Radio & TV Produc, Vet Sci Tech. <i>Honors Program-grounded in liberal arts for highly motivated students. LD Services, auxiliary aids & accommodations on all 3 campuses</i>	NJCAA	\$ 4,770 \$ 9,540 N/A	HS Diploma GED	Rolling FAFSA
STEVENSON UNIVERSITY 1525 Greenspring Valley Road Stevenson, MD 21153 1-877-468-6852 100 Campus Circle Drive Owing Mills, MD, 21117 (443) 352-4402 admissions@stevenson.edu www.stevenson.edu	Private 4 yr 3,3062 Coed	Account, Appl Math, Bio, BioChem, Business Admin, Business Comm, Business Info Sys, Chem, Compu Info Sys, Crim Just, Digital Mktg, Early Child, Elem, & Middle Schl Edu, Eng Lang & Lit, Environ Sci, Fashion Des, Fashion Merch, Film & Moving Image, Human Servs, Interdis Studies, Legal Stu, Medical Lab Sci, Nursing, Psych, Public Hist, Sales MgmtTheatre /Media Perform, Visual Comm Design. 5-yr BS/MS Programs: Busin & Tech Mgmt, Forensic Sci, Forensic Stu, Healthcare Mgmt, MA in Teaching-STEM. <i>LD Services-Office of Academic Support</i>	Div III NCAA	\$35,490 \$35,490 \$12,922 included	SAT 1350-1670 all three sections ACT 19-25 3.54 weighted	March 1 Feb 15 FAFSA
STONEHILL COLLEGE 320 Washington Street, Easton, MA 02357-5610 (508) 565-1373 admission@stonehill.edu www.stonehill.edu	Private 4 yr 2,400 Coed	Accounting, Am Studies, Bio, Business, Biochem, Chem, Commun, Comp Sci & Eng (3 + 2 program with Univ of Notre Dame), Criminology, Econ, Edu (Early Child, Elem & Sec Teacher Cert), Engineering, Finance, Languages, Health Care Adm, Hist, Int'l Business, Marketing, Mgmt, Math, Neuroscience, Philosophy, Physics, Poli Sci, Public Adm, Religion, Soc, Visual & Performing Arts-Graphic Design, Art History, Studio Arts. <i>Honors Program</i>	Div II	\$38,550 \$38,550 \$14,720	test optional	Nov 1 ea, Dec 1 ed, Jan 15 reg Feb 1 FAFSA, Profile

SUFFOLK UNIVERSITY 8 Ashburton Place Boston, MA 02108 (617) 573-8460 admission@suffolk.edu www.suffolk.edu	Private 4 yr 5,500 Coed	Over 60 programs. BFA: Interior Design, Graphic Des, Fine Arts; BA/BS: Biology, Communications/Journalism, Global Business, Government, Physics, Psych; Sociology (Criminal Just), Health Careers, Biotechnology BSBA: Accounting, Entrepreneurship, Finance, Global Business, Mktng, Mgmt. Second campus in Madrid, Spain. <i>Honors Program. LD-Writing Ctr, 2nd Language Servs, Counseling Ctr</i>	Div III	\$37,128 \$37,128 \$15,046 \$ 147	SAT/ACT/ TOEFL 3.2	Feb 15 March 1 FAFSA
SYRACUSE UNIVERSITY 100 Crouse Hinds Hall, 900 South Crouse Ave. Syracuse, NY 13244-2130 (315) 443-3611, orange@syr.edu; www.syr.edu	Private 4 yr 14,000 Coed	More than 200+ majors in the following schools and colleges: Architecture; Art & Science; Education; Engineering & Computer Sci; Management, Information Studies; Public Communications; Sport & Human Dynamics; Visual & Performing Arts. Honors program. <i>LD services available</i>	NCAA Div I	\$43,440 \$43,440 \$15,217 \$ 1,582	SAT 1200 ACT 27/28 3.5	Nov 15 ed, Jan 1 reg Feb 2 FAFSA, Profile
TOMPKINS CORTLAND COMMUNITY COLLEGE – SUNY 170 North Street, Dryden, NY 13053 (607) 844-6580 admissions@tc3.edu; www.tc3.edu	Public 2 yr 3,400 Coed	40 programs of study including Health (Nursing), Business, Hospitality, Liberal Arts & Sciences, Public Service, Computer Forensics, Computer Technology, Creative Writing, Outdoor Recreation and Communications. New Programs: Culinary Arts, Sustainable Farming & Food Systems	NJCAA	\$ 4,300 \$ 8,600 \$10,000 \$ 500	HS Diploma, GED, place- ment testing	Rolling FAFSA
TOWSON UNIVERSITY 8000 York Road, Towson, MD 21252 (410) 704-2113 or 1-888-4TOWSON admissions@towson.edu www.towson.edu	Public 4 yr 22,343 Coed	Accounting, Allied Health, Art, Bio, Business Admin, Chem, Comp Sci, Dance, Edu, Economics, Geology, Health Sci, Hist, Int'l Studies, Mass Communication, Math, Medicinal Chem, Molecular Bio, Biochem, and Bioinformatics, Music, Nursing, Occup Therapy, Philosophy, Phys Ed, Physics, Poli Sci, Psych, Religious Studies, Social Sci, Spec Ed, Speech-Lang, Women's Studies. <i>Honors College; LD Services-Free Tutoring, Counseling Center, Career Center</i>	NCAA Div I	\$ 9,408 \$20,788 \$11,754	SAT 1520-1730; ACT 22-25 3.3-3.7	Spring/Oct 15 Fall/Jan 15 Feb 15/priority FAFSA, Dec 1 merit-based
U.S. ARMY RECRUITING 116 Fulton Avenue, Hempstead, NY 11550 (347) 524-1821; warren.r.moore.mil@mail.mil www.goarmy.com	Public Coed	The Concurrent Admissions program allows you to enlist in the Army and register in college at the same time. You can train in one of 150 jobs that easily convert into civilian careers. Army Strong! www.goarmy.com	N/A	up to \$65,000 in tuition assistance and up to \$20,000 cash bonus	ASVAB	Rolling
UNIVERSITY OF BRIDGEPORT 126 Park Ave, Bridgeport, CT 06604 1-800-EXCEL-UB; (203) 576-4552 admit@bridgeport.edu www.bridgeport.edu	Private 4 yr 3,500 Coed	Over 60 academic programs including Biology (Pre-Chiro & Pre-Naturopathic), Business Admin, Computer Engineering, Comp Sci, Criminal Justice & Human Security, Dental Hygiene, Fashion Merch, Graphic Design, Health Sci, Human Services, Literature & Civilization, Martial Arts Studies, Mass Communication, Medical Lab Sci, Music, Nursing, Psychology, Religion & Politics, Social Sci	NCAA Div II	\$33,000 \$33,000 \$14,000 included in R&B	SAT/ACT 3.0	JRolling
UNIVERSITY OF CONNECTICUT 2131 Hillside Rd, U-3088, Storrs, CT 06269 (860) 486-3137 beahusky@uconn.edu; www.uconn.edu	Public 4 yr 18,000 Coed	100+ majors. Agriculture and Natural Resources, Business Admin, Education, Engineering, Fine Arts, Liberal Arts and Sciences, Nursing, Pharmacy. <i>Honors Program-challenging academics for high-achieving students, personalized environment, individual, social & cultural development, leadership. LD Services-note taking, test accommodations, alternate media services</i>	Div I	\$ 9,858 \$30,038 \$12,074 \$ 2,902	SAT 1150-1350 (no SAT IIs) 3.3/B+	Jan 15 March 1 FAFSA

NASSAU COUNSELORS' ASSOCIATION – FALL 2017 COLLEGE EXPO – PAGE 38

Institution Address Phone E-mail Web Site	Public/Private 2 or 4 year Enrollment Student Body	Undergraduate Majors or Schools & Colleges Honors Program LD Program/Services	Sports Division	Tuition: Instate: Out-of-state: Room & Board: Fees:	Tests Required Grade Point Average	Deadlines: Application Fin Aid Types of Fin Aid Forms
UNIVERSITY OF HARTFORD 200 Bloomfield Avenue West Hartford, CT 06117 1-800-947-4303; (860) 768-4296 admission@hartford.edu www.hartford.edu	Private 4 yr 4,492 Coed	Over 100 programs of study in the following Schools and Colleges: Arts and Sciences; Hillyer (Liberal Arts); Engineering, Tech & Architecture; The Hartt School (music, dance, theater); Education; Nursing & Health Professions; and the Barney School of Business and the Art School. <i>Honors Program-offered to incoming freshman with Regents or Presidents scholarships, can also apply once a current student with 3.0 or better. Access – Ability Services for documented students, Tracy Carlson-Director.</i>	Div I America East Conf	\$36,088 \$36,088 \$12,346 \$ 2,822	SAT I/ACT 3.0	Rolling after Nov 15 ea Feb 15 FAFSA
UNIVERSITY OF MAINE AT ORONO 5713 Chadbourne Hall Orono, ME 04469-5713 1-877-4UM-ADMIT umaineadmissions@maine.edu; www.umaine.edu	Public 4 yr 9,000 Coed	Over 90 majors in the Colleges of Education and Human Development, Engineering, Business, Public Policy & Health, Natural Sciences, Forestry and Agriculture, Liberal Arts & Science. Schools of Performing Arts, Nursing, Social Work, Engineering Technology <i>Honors College and LD Services</i>	Div I NCAA	\$ 9,626 \$23,876 \$ 8,348 \$ 1,204	SAT I/ACT B	Dec 1 EA March 1 FAFSA
UNIVERSITY OF MARYLAND Office of UG Admissions, Mitchell Bldg. College Park, MD 20742 1-800-422-5867; (301) 314-8385 um-admit@umd.edu; www.umd.edu	Public 4 yr 27,000 Coed	110 programs leading to Bachelor of Arts and Bachelor of Science degrees in 13 Schools/Colleges. <i>Honors College-small classes that encourage discussion and innovative thinking. 1,000 undergraduates welcomed into this highly selective program. LD Program-Testing & reading accommodations, assistive technology, note taking, adaptive technology lab. Coordinated by Disability Support Services 301-314-7682</i>	NCAA Div I Big 10	\$10,180 \$32,044 \$11,758	SAT I/ACT A-	Nov 1 priority, Jan 20 regular Jan 1 FAFSA
UNIVERSITY OF MARYLAND BALTIMORE COUNTY 1000 Hilltop Circle, Baltimore, MD 21250 (410) 455-2292 admissions@umbc.edu; www.umbc.edu	Public 4 yr 12,000 Coed	College of Arts, Humanities and Social Sciences, College of Engineering and Information Tech, College of Natural and Mathematical Science, Erickson School of Aging Studies. <i>Honors Program-highly selective, 125 freshmen max each Fall. LD Services-Academic advisement, counseling, extended test-taking time, interpreters, ESL, exposure to cultural, academic, and leadership enrichment activities, etc.</i>	NCAA Div I Am East Conf	\$ 9,000 \$19,000 \$ 8,000 included	SAT/ACT 3.6	Nov 1 ea, Feb 1 final Feb 14 FAFSA
UNIVERSITY OF MASS. – AMHERST Admissions Center, Amherst, MA 01003-0120 (413) 545-0222 mail@admissions.umass.edu; www.umass.edu	Public 4 yr 20,000 Coed	Humanities & Fine Arts, Nursing, Natural Sciences, Engineering, Education, Business Mgmt; School of Public Health & Sciences, College of Social & Behavioral Sciences, Stockbridge School of Agriculture, Isenberg School of Management. <i>Commonwealth Honors College info@honors.umass.edu, www.honors.umass.edu, 413-545-2483. LD Services-ds@educ.umass.edu, www.umass.edu/disability, 413-545-0892</i>	NCAA Div I	\$34,000 \$44,000 total	SAT 1310 ACT 27 3.7	Nov 1 ea, Jan 15 reg
UNIVERSITY OF MASS. – LOWELL 220 Pautucket St, Ste 420, Lowell, MA 01854 (978) 934-3931 admissions@uml.edu; www.uml.edu	Public 4 yr 10,000 Coed	120 bachelor's, 39 master's and 33 doctoral degree programs in the College of Fine Arts, Humanities & Social Sciences, Kennedy College of Sciences, Frances College of Engineering, College of Health Sciences, Manning School of Business, Graduate School of Education. New Majors: Peace & Conflict Studies, Forensic Sci, Music Business, Sound Recording Technology. Co-ops, internships, service-learning, research. <i>UMass Lowell Honors College, LD Services available</i>	NCAA Div I	\$14,800 \$31,865 \$12,496	SAT I /ACT 3.5	Nov 1/Feb 1 March 1 FAFSA

UNIVERSITY OF MICHIGAN 1220 SAB 515 E. Jefferson, Ann Arbor, MI 48109 (734) 764-7433 www.admissions.umich.edu	Public 4 yr 25,994 Coed	Over 220 areas of study in 11 undergraduate schools and colleges – Architecture and Urban Planning, Art and Design, Business School, School of Dentistry, School of Education, College of Engineering, Kinesiology, College of Literature, Science & the Arts, School of Music, Nursing, Pharmacy <i>Honors Program-offered by the College of Literature, Science & the Arts by invitation</i>	NCAA Div I	\$13,528 \$43,148 \$ 9,996	SAT 2030-2250 ACT 29-33 3.85	Feb 1 Feb 15 FAFSA
UNIVERSITY OF RHODE ISLAND Newman Hall, 14 Upper College Road Kingston, RI 02881-1310 (401) 874-7100 admission@uri.edu; www.uri.edu	Public 4 yr 14,680 Coed	8 degree-granting Colleges: Arts & Sciences; Health Sciences, Nursing, Pharmacy, Business Administration, Engineering, Environment & Life Science, Education & Professional Studies. <i>Honors Program-Top 10% or endorsed by HS Principal or Counselor, www.uri.edu/honors_prog. LD Services-http://autocrat.uri.edu/dss.html</i>	Div I Div I AA football	\$ 13,792 \$30,042 \$12,452	SAT/ACT 3.5-4.0	Dec 1 ea, Feb 1 reg March 1 FAFSA
UNIVERSITY OF ROCHESTER PO Box 270251, Rochester, NY 14627-0251 (585) 275-3221 admit@admissions.rochester.edu www.rochester.edu	Private 4 yr 5,412 Coed	African & African-Am Stu, Am Sign Lang, Anthrop, Archaeol, Arts, Audio & Music Engin, Bioethics, Brain & Cognitive Sci, Comp Sci, Econ, Engin Sci, Eng, Epidemiology, Financial Economics, Health Policy, Hist, Int'l Relations, Linguistics, Materials Sci, Math, Molecular Genetics, Music, Optical Engin, Physics, Poli Sci, Psych, Religion, 3-2 prog, combined-admission prog, dual degree prog, Take 5 Scholars Program, UG Research. <i>Honors-Sr. Scholars Program. LD Services available.</i>	NCAA Div III	\$49,260 \$49,260 \$14,818	Test flexible 3.8	Nov 1 ed, Dec 1/Jan 5 reg Dec 1/Feb 15 FAFSA, Profile
UNIVERSITY OF SCRANTON 800 Linden Street, Scranton, PA 18510 1-888-SCRANTON; (570) 941-7540 admissions@scranton.edu www.scranton.edu	Private 4 yr 4,000 Coed	Over 60 major programs including Bio, Business, Communication, Nursing, Phys Therapy, Occup Therapy & Pre-Med & Pre-Law. <i>Honors Program-traditional style, independent structure, Business Leadership Prog-very competitive open to all majors, great for networking. Special Jesuit Liberal Arts Prog-focused on written and verbal communication, receive minor in philosophy. LD-Center for Teaching & Learning Excellence, tutoring, writing center, note taking, test accommodations</i>	NCAA Div III	\$43,310 \$43,310 \$14,618 \$ 400	SAT/ACT 3.2-3.8	Nov 15 ea, Rolling Mar 1 preferred FAFSA
UNIVERSITY OF TAMPA 401 West Kennedy Blvd, Tampa, FL 33606 1-888-646-2738; (813) 253-6211 admissions@ut.edu; www.ut.edu	Private 4 yr 8,000 Coed	200 majors/minors in four colleges: College of Business; Arts & Letters; Natural & Health Sciences; Social Sciences, Mathematics & Education. ROTC-Army, Air Force, Naval, over 200 organizations. <i>Honors Program-Oxford Semester, Research Fellowships. LD Services-Academic Success Center</i>	NCAA Div II	\$25,858 \$25,858 \$10,196 \$ 1,882	SAT 1120 old, 1190 new ACT 25 3.4	Nov 15, Jan 15 Feb 15 FAFSA
UTICA COLLEGE 1600 Burrstone Road Utica, NY 13502-4892 1-800-782-8884; (315) 792-3006 admiss@utica.edu; www.utica.edu	Private 4 yr 2,537 Coed	36 majors including Accounting, Bio, BioChem, Chem, Computer Sci, Crim Justice, Economic Crime Investigation, Construction Mgt, Educ, Eng, Foreign Lang, GeoSci, Hist, Journalism, Mgmt, Nursing, Occupational Ther, Phys Therapy, Psych, Psych-Child-life, Public Relations/Journalism, Cyber Security & Information Assurance. <i>Honors Program-by invitation only; LD Services-Office of Learning Services 315-792-3032</i>	NCAA Div III	\$20,126 \$20,126 \$10,834 \$ 550	SAT only req. for PT, OT Accel Med, & Acad Scholarships 3.2	Rolling Feb 15 FAFSA
VAUGHN COLLEGE OF AERONAUTICS & TECHNOLOGY 86-01 23rd Ave, Flushing, NY 11369-1037 1-866-6 VAUGHN; (718) 429-6600 x118 admitme@vaughn.edu www.vaughn.edu	Private 4 yr 1,600 Coed	13 academic programs Bachelor of Science: Aeronautical Sci, Aircraft Op (Flight), Airport Mgmt, Airline Mgmt, Aviation Maintenance, Aviation Maint Mgmt, Mechanical Engine Tech, Mechatronic Engine, Electronic Engineering Tech, Electrical and Mechanical Engineering, General Mgmt. Assoc of Applied Science: Aviation Maintenance, Avionics, Animation & Digital Tech & Aero Eng Tech. Assoc of Occu Studies: Aircraft Main. 1 of 36 colleges in the country selected by FAA to train students for futures as Air Traffic Control specialists.	Intramural	\$22,740 \$22,740 \$12,000	SAT I B avg	March 1 FAFSA

NASSAU COUNSELORS' ASSOCIATION – FALL 2017 COLLEGE EXPO – PAGE 40

Institution Address Phone E-mail Web Site	Public/Private 2 or 4 year Enrollment Student Body	Undergraduate Majors or Schools & Colleges Honors Program LD Program/Services	Sports Division	Tuition: Instate: Out-of-state: Room & Board: Fees:	Tests Required Grade Point Average	Deadlines: Application Fin Aid Types of Fin Aid Forms
WAGNER COLLEGE 1 Campus Road Staten Island, NY 10301 (718) 390-3411 admissions@wagner.edu www.wagner.edu	Private 4 yr 2,000 Coed	36+ majors & minors. Anthro, Art, Arts Admin, Art Hist, Behavioral Econ, Bio, Biopsych, Bus Admin, Chem, Comp Sci, Dance (minor), Econo, Edu, Eng, Lang, Film & Media Stu, Gender Stu, (minor), Hist, Info Sys (minor), Int'l Affairs, Journalism (minor), Math, Microbio, Music, Nursing, Philos, Phys Asst, Physics, Poli Sci, Psych, Public Pol & Admin, Religion Studies (minor), Soc/Anthro, Theatre, Pre-Med, -Dental, -Vet, -Law. <i>Honors Program special invitation; maintain min GPA & required Honors classes, complete Sr Honors Project. LD Servs–some accommodations</i>	NCAA Div I Div I-AA football	\$43,500 \$43,500 \$13,260	test optional SAT 1800 ACT 26 3.6/88	Dec 1 ea, Feb 15 Reg, Dec 1 Phys Asst, Dec 1 Theatre Feb 15 priority FAFSA, TAP
WEST CHESTER UNIVERSITY OF PA 100 West Rosedale Avenue West Chester, PA 19383 (610) 436-3411 ugadmiss@wcupa.edu; www.wcupa.edu	Public 4 yr 6,091 Coed	90 programs of study in the Colleges of: Arts & Humanities, Business & Public Management, Education & Social Work, Sciences & Mathematics, Health Sciences. Unique majors: Pharmaceutical Product Development, Forensic & Toxicological Chemistry. <i>Honors College. Office of Services for Students with Disabilities</i>	NCAA Div II	\$ 7,238 \$18,096 \$13,000	SAT/ACT 3.0+, B	Modified Rolling March 1 FAFSA
WESTERN CONNECTICUT STATE UNIVERSITY 181 White Street, Danbury, CT 06810 (203) 837-9000 www.wcsu.edu	Public 4 yr 6,000 Coed	5 academic units: Ansell School of Business, School of Arts & Sciences, School of Professional Studies, School of Visual & Performing Arts & the Division of Graduate & Continuing Education. Majors in Business, Crim Just, Edu, Mgmt, Meteorology, Music, Nursing, Social Work. <i>University Scholars Program criteria: SAT 1200+ and top 25% HS class. Office of Disability Services-(203) 837-9252 or (203) 837-8277</i>	Div III	\$10,017 \$22,878 \$12,089 \$ 5,804	SAT 1080 m&v ACT 21 B	Rolling March 15 FAFSA
WESTERN NEW ENGLAND UNIVERSITY 1215 W. Wilbraham Road Springfield, MA 01119 1-800-325-1122 x1321; (413) 782-1321 learn@wne.edu; www.wne.edu	Private 4 yr 2,550 Coed	50 majors in the Colleges of: Arts & Sci, Business, Engineering, Pharmacy & School of Law. New majors: Entrepreneurship, Int'l Busi, Pharm Busi, Gen Busi w/a Human Res + Busi Law Concen, Gen Busi w/a Health Care Admin Concen, Health Sci, Am Studies, Civil Engin. 5-yr BA/Masters/Sci in Engin Mgmt, Mech Engin & Electrical Engin, 5-yr MBA in Business, Engin, Arts & Sci. 6-yr Biomed Engin/Law Prog. <i>Honors Program-challenging courses in variety of disciplines for Colleges of: Arts & Sci, & Business. Global Honors program for Coll of Business separate from traditional program; LD-Student Disability Serv</i>	Div III Common-wealth Coast Conf	\$30,780 \$30,780 \$12,570 \$ 2,240	SAT/ACT 3.25-3.90	Rolling April 15 FAFSA
WILKES UNIVERSITY 84 W. South Street, Wilkes-Barre, PA 18766 1-800-WILKESU x4400; (570) 408-4400 admissions@wilkes.edu www.wilkes.edu	Private 4 yr 2,400 Coed	Over 50 majors, including Accounting, Business Admin, Communications, Computer Sci, Criminology, Digital Des and Media, Educ, Engineering, Musical Theater, Neuroscience, Nursing, Social & Natural Sci, Theater Arts, Math, Entrepreneurship. 6 year Doctor of Pharmacy Prog. Pre-Prof progs in Dentistry, Medicine, Optometry, Podiatric, Vet, Law. <i>LD Services-provided with IEP</i>	Div III 23 sports	\$33,568 \$33,568 \$13,646 \$ 1,564	SAT 1100 (2 sections) 3.0	Rolling Feb 1 pharmacy FAFSA
YORK COLLEGE OF PENNSYLVANIA 441 Country Club Road York, PA 17403-3651 (717) 849-1600 admissions@ycp.edu www.ycp.edu	Private 4 yr 4,000 Coed	Account, Behav Sci, Bio, Busi Admin, Chem, Civil Eng, Comp Info Sys, Comp Sci, Crim Just, Edu, Electr Engin, Engin Mgt, Eng Lit Stu, Finance, Fine Art, Forensic Chem, Graph Des, Hist, Hosp Mgt, Intelligence Analysis, Mgt, Mktg, Mass Comm, Mech Eng, Music Ed, Music Industry & Recording Tech, Nuclear Med Tech, Nursing-LPN & RN, Profess Writing, Public Relat, Radiography, Rec/Leisure Admin, Resp Care, Soci, Spanish, Sport Mgmt, Supply Chain Oper. Mgt, Theater. <i>Learning Resource Ctr-tutorial/ study skills assistance, signers for hearing impaired, extended time/exams, auxiliary aids, class taping</i>	NCAA Div III	\$19,450 \$19,450 \$10,830	new SAT 1080 ACT 21+ 3.4+	Rolling March 1

Island Drafting & Technical Institute

The College for Careers®

From High School To a Future In 15 Months

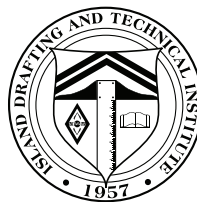


Earn Your Degree in

✓ **DRAFTING** ✓ **COMPUTERS**
✓ **DESIGN** ✓ **ELECTRONICS**

Financial Aid for Those Who Qualify ♦ Scholarships ♦ Job Placement Assistance

Located in the
Village of Amityville, NY
at 128 Broadway
(631) 691-8733
www.idti.edu



IDTI
The College for Careers®

Accredited College, Accrediting Commission of Career Schools and Colleges

The College Search Online Resource Guide

COLLEGE INFORMATION AND SEARCH SITES

All About College

allaboutcollege.com/colleges/united_states/usa.htm

College Board – collegeboard.org

College Net – collegenet.com

College Surfing – collegesurfing.com

College View – collegeview.com

Education Planner – educationplanner.org

Peterson's Guide – petersons.com

Princeton Review – princetonreview.com

FINANCIAL AID FORMS & SCHOLARSHIP OPPORTUNITIES

Forms:

CSS Profile – profileonline.collegeboard.com

Free Application For Federal Student Aid
fafsa.ed.gov

Information & Search:

Adventures in Education – aie.org

All Student Loan – allstudentloan.org

College Answer – collegeanswer.com

Fastweb – fastweb.com

Federal Student Aid – studentaid.ed.gov

Finaid – finaid.com

New York State Excelsior Scholarship Program

hesc.ny.gov/faprograms
or text COLLEGE to 81336

STANDARDIZED TESTING INFORMATION SITES

Registration:

ACT Exam – actstudent.org

PSAT/SAT/AP – collegeboard.com/testing

Preparation Websites:

ACT Strategies – act.org

Huntington Learning Center

huntingtonlearning.com

The Princeton Review

princetonreview.com/coursefinder

SAT Question of the Day

collegeboard.com/apps/qotd/question

SPECIAL INTEREST SITES

Catholic Colleges – catholiccollegesonline.org

Council for Christian Colleges – cccu.org

Hillel-Jewish Campus Life – hillel.org

Hispanic Scholarship Fund – hsf.net

Historically Black Colleges and Universities

hbcuconnect.com

LD Online – ldonline.com

LD Resources – ldresources.org

Native American College Resources –

hanksville.org/NAresources/indices/NAcollege.html

Student Athletes – NCAA.org

CAREER DEVELOPMENT SITES

U.S. Dept. of Labor – careeronestep.org

studentsandcareeradvisors



SAMPLE COLLEGE APPLICATION ESSAY QUESTIONS and Tips for Writing Your Essay

By Robert Pertusati, Sr. Associate Dean and Director of Recruitment
Undergraduate Admissions, Stony Brook University

Sample Essay Questions

- What person (current or historical) do you most admire and why?
- Describe an experience that has given you great satisfaction.
- What do you feel are the most significant issues facing the world today? Why?
- Describe an experience from a play, film, or book that has been instrumental in changing your viewpoint.
- Discuss one or two academic experiences (books, projects, or papers that you have done; a specific course or subject in school) that have meant the most to you during your secondary years.
- List the books that have had the greatest impact on you during your life, and briefly discuss one of them.
- For which one of your personal qualities would you want to be remembered by your classmates?
- Identify and discuss a significant problem facing your generation that has had a special significance for you.
- Discuss any academic/intellectual interests that are especially important or meaningful to you.
- Discuss nonacademic interests that have been most meaningful to you.
- Analyze a problem that faces you or your community, region, or nation. How did the problem develop and how might it be solved?
- Whom would you like to interview and why?
- Ask a provocative and revealing question of a college applicant. Now that you have asked it, answer it.
- Describe the greatest challenge you have faced or expect to face.
- If you could create a national holiday, what would you choose to celebrate?
- If you could spend a day with anyone, who would it be, and how would you spend your time?

Tips for Writing Your Essay

The Dos

- Be sure you understand and answer the questions. If there is more than one part, answer what is asked of you in each part.
- Confine your answers to the space provided.
- Type your essay unless you are specifically asked to respond in your own handwriting. Use ink, and be sure your responses are neat and legible.
- Be accurate and write sincerely in your best natural style. Use simple and concise language.
- You should be sure to write a draft; edit, revise, and write a final essay before copying it onto the application form.
- Write your essays yourself. Although you may seek help from your counselor, teacher, or parents in selecting a topic or in editing, you must first do the writing. College Admission Committees are not easily fooled.
- If you are offered an optional essay or paragraph, do it. It will show you care and are willing to go the extra mile.

The Don'ts

- Avoid trying to guess what the college wants you to say. There are no "right" answers to the essay questions.
- Avoid being flippant or expressing yourself in poor taste.
- Avoid trying to be funny or clever. If you are naturally humorous and clever in the use of language, exercise your talent, but avoid trying to force humor.
- Avoid merely listing again your activities in your essay.
- Avoid using ornate, pretentious language.





WWW.FTC.EDU | (631) 656-2110

WHAT'S YOUR STORY? *Create It @ FTC*



AUDIO RECORDING • BUSINESS MANAGEMENT • CHILDHOOD EDUCATION
FILM/VIDEO • JAZZ/COMMERCIAL MUSIC • MASS COMMUNICATION
MUSIC BUSINESS • MUSIC EDUCATION • MUSIC PERFORMANCE • THEATRE ARTS

FIVE TOWNS COLLEGE

305 N Service Rd, Dix Hills, NY 11746 | (631) 656-2110 | WWW.FTC.EDU

Follow us on





Challenge Your Mind, Not Your Budget.

With today's most sought-after programs, small classes, valuable scholarships, flexible schedules and a complete college experience, Suffolk offers countless opportunities to grow both academically and personally.

What's more, by choosing to enroll at here first, our students often save tens of thousands of dollars while gaining the opportunity to grow, graduate and transfer to some of the nation's most prestigious colleges and universities.

Find out why making Suffolk your first choice is a decision that's second to none.



(631) 451-4111 • sunysuffolk.edu/Enroll

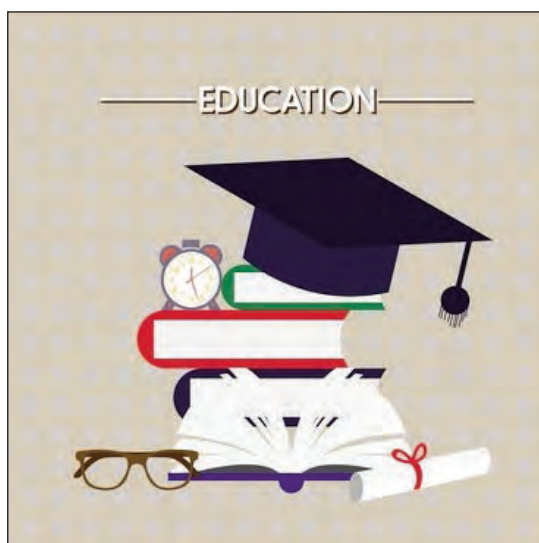
Build Your Future at Queens College



- Among top 1% of colleges that move students from poverty to prosperity*
- More than 170 undergraduate & graduate programs
- Over 100 clubs & organizations, including NCAA Division II athletics
- On-campus housing in our Summit Apartments

To learn more about Queens College visit qc.cuny.edu/futurestudents.

*As reported in the *New York Times*.



FINANCIAL AID

What is Available and How to Apply for It

Concerned about how you'll pay for your college education? Of course you are. In these scary times, many students and their parents are wondering how they'll be able to make it work.

One of the most important things you can do is to begin the college application process early. Acceptance into a college degree program is a requirement to receive financial aid. Colleges can't officially offer you a financial aid package until you've been admitted.

All colleges will require you to complete the Free Application for Federal Student Aid (FAFSA) to be considered for financial aid. Many schools also require additional forms, such as the CSS Profile Form or other financial worksheets to help them make a determination about your need. Filing these forms as early as possible is the key to maximizing your chances of getting money. The FAFSA should be filled out as soon after October 1st of your senior year in high school as possible. Contact the college's financial aid office to find out their recommended filing date for both the FAFSA and any other forms that they require. You don't want to lose out on money just because you missed an important deadline.

Most financial aid for college is awarded on the basis of a student's financial need, which is determined through the use of these forms. The FAFSA can be filed online at www.fafsa.ed.gov and is a relatively simple form for most families. Having a copy of your current year's tax return right beside you is the trick. It's a user-friendly form that you DO NOT have to pay someone to fill out for you. If you run into trouble with a particular question or are not sure how to answer something, the financial aid offices at the colleges where you are applying will be happy to help you . . . for free!

Financial aid comes from many different sources and in many different forms:

SCHOLARSHIPS

There are scholarships and grants awarded by some colleges based on other criteria besides financial need. These are usually for academic performance, athletic ability, or in recognition of some other form of achievement. Basically, the student demonstrates a quality that the college values and they want to recognize that quality through some form of scholarship.

These awards vary greatly from one institution to another, so it is important to research all the types of scholarships that the colleges you are applying to offer their students. Looking carefully through the college's websites is a terrific way to learn about scholarships

and the criteria needed to qualify. Be sure to check out whether they are renewable each year and what the student will need to do in order to keep them.

New York State Scholarships: See page 53 for information about the New York State Excelsior Scholarships for SUNY and CUNY colleges and the Enhanced Tuition Awards for private, nonprofit colleges.

NEED-BASED AWARDS

For many students, help with tuition costs will be based on financial need. This aid may come from the federal government, aid from the state in which you live, or from private funds from the college you plan to attend.

AID COMES IN THREE BASIC TYPES

Grants

Grants are a desirable type of funding because they don't have to be paid back! They can come from the Federal government, state government and the institutions themselves.

To apply for Federal grants, the student completes the FAFSA to determine eligibility for the Pell or Supplemental Educational Opportunities Grant (SEOG).

To apply for the New York State Tuition Assistance Program (TAP) grant, the student starts with the FAFSA, then will be asked to complete a TAP application.

To apply for grants from the colleges themselves, students should work closely with the financial aid offices at the colleges where they are applying to make sure that all necessary forms and deadlines are met.

Work Opportunities

Most students find that holding a part-time job while attending college is critical to paying for their educations. Students may qualify to work through the *Federal Work Study (FWS)* program. Typically, the students work 10-20 hours a week, on campus, in exchange for pay. The FAFSA form helps to determine eligibility for FWS. If the student does not qualify for FWS, most colleges also offer regular, on-campus student employment to students.

Loans

Loans are available to students to help them pay for their college education. It is important to remember that loans do have to be paid back. Some loans do allow students to hold off on repayment until after the student graduates or stops going to school.

(continued on page 48)

Federal Stafford Loans/Federal Direct Stafford Loans are guaranteed for every student who is enrolled in a college or approved certificate program at least 1/2 time (6 credits a semester). With each year in school, the maximum loan eligibility increases and students are able to borrow more funds. These are student loans. Parents do not need to co-sign for students in order to borrow through this program. However, parent income information for dependent students is required to determine the type of loan that a student will receive.

Stafford loans come in two types: *subsidized* and *unsubsidized*. There are slight variations in the interest payments that students will make, but the biggest distinction between subsidized and unsubsidized loans is: When does the interest become due? In a subsidized loan, students do not pay interest or principal on the loan while they are in school, then they get a six-month grace period after graduation before they can take up to 10 years to pay the money back. In an unsubsidized loan, students are responsible for making interest payments on the loan while they attend school.

Colleges will determine your eligibility for subsidized or unsubsidized Stafford loans based on the FAFSA information you completed, how much need you demonstrate and how that need compares with the cost of education at the school.

Another loan that is available for students is called the **Carl D. Perkins National Direct Student Loan**. Awarded by some colleges this program provides low interest loans based on need. No repayment of principal or interest is required while the student is in college and is taking six credits or more per semester. The loan is repaid at a low interest rate beginning six months after graduation.

Finally, the **Federal Parent Loan for Undergraduate Study (PLUS)** is available for parents of dependent students. Parents who based on a credit analysis qualify for the PLUS loan, are permitted to borrow money on behalf of their children. They may borrow up to the entire cost of education, minus any aid that the child receives. Parents will choose whether they want the loan payments to begin immediately or if they want the loan to be deferred until after their child graduates from his/her undergraduate program.

HOW IS FINANCIAL NEED DETERMINED?

When students complete the FAFSA, the information they provide is run through a methodology prepared by the Federal government and an Estimated Family Contribution (EFC) is determined for each student. This

is not the minimum or maximum amount that a student has to pay, but rather represents the minimum amount a child CAN contribute toward his/her education, according to the Federal Government.

Based on the EFC, colleges then make determinations about eligibility for grants, work and loan awards at their institutions. They use the EFC to create a Financial Aid Package for students.

THE FINANCIAL AID PACKAGE

Most students who are eligible for assistance receive what is referred to as a "financial-aid package." This "package" usually is comprised of several types of aid – grants, jobs and loans, which in total meet the student's unmet financial need.

Colleges can only prepare and send a financial-aid package to admitted students. Once students receive their award letters, they begin to compare one offer to another to determine the affordability of a particular school.

SO...WHAT SHOULD I DO NOW?

You're off to a great start by attending the EXPO today! Selecting the institutions to which you'll apply is the first step. Don't forget to include 'financial fit' in the mix, along with academic and social fit as you consider among your choices.

You can begin to research what each institution on your short list offers in the way of scholarships and financial aid, pay attention to deadlines and required forms and begin to formulate a list of questions you have regarding financial aid.

In your senior year of high school, as soon after October 1st as possible, you'll fill out the FAFSA form. And that will start the ball rolling.

You'll want to follow all instructions carefully, pay attention to important deadlines and keep all your information in a safe and organized place.

OTHER SOURCES OF FINANCIAL AID

There are other sources of financial aid which have not been mentioned here. Many religious and community organizations offer scholarships. Many companies offer educational aid for their employees' sons and daughters. Start researching scholarship and grant opportunities on the web. And remember . . . DON'T PAY ANYONE TO FIND YOU MONEY! You can do this on your own.

GOOD LUCK!

The College Interview Checklist

✓ Schedule Your Interview in Advance

- Choose a time when classes are in session
- Select a time when another activity of interest is going on (football game, theater production, etc.)
- Avoid dropping in

✓ Make Overnight Arrangements if Necessary

- Request college to send list of area hotels
- Ask if college has spend-a-night programs in residence halls or a “buddy program”
- Ask about places to eat on campus

✓ Be Prepared

- Know the basic facts about the college you are visiting
- Obtain college literature prior to your visit
- Be prepared to talk about yourself, your interests, goals, academic record
- Know what it is you want from a college or university
- Prepare your questions in advance

✓ Parents are Welcome

- Discuss in advance the questions you will ask so they don't get repeated by your parents
- Don't leave it to your parents to dominate the discussion or work at impressing the interviewer

✓ Dress Appropriately

- Simple, neat, comfortable
- Not too casual, not too formal, when in doubt, go conservative
- Avoid flashy, bulky, noisy
- Remove hat!!
- Limit the baggage (backpacks, cases, bags, etc.)

✓ Academic Record

- Be prepared to discuss your academic record (strengths, weaknesses, trends, excessive absences, etc.)
- Bring transcript and test scores with you in case interviewer asks for them

✓ Portfolios, Resumes, Videos, Recommendations

- Bring these items to an interview only if requested, otherwise, save them for your application packet
- Ask ahead of time if your interviewer would like to see your work or ask if appointment can be coordinated with someone who does (coach, art faculty)
- Don't oversell yourself with “packaging”

✓ Questions

- Have some! This demonstrates interest
- Write your questions down and bring them to your interview
- Be prepared to answer questions as well

✓ Arrange for a Campus Tour

- Ask questions of your tour guides – they are usually students
- Visit the important places – library, residence hall, lecture room, labs, studios, dining facilities, etc.
- Get a feel for the campus and students
- Is this where you want to spend the next few years?

✓ Follow-Up

- Get interviewer's name (and e-mail address)
- Follow up with a short, simple thank you note
- Don't be shy – write or call later on if you have questions about the college or the status of your application
- Don't be a pest

✓ Be Yourself

- An interview is a conversation not an inquisition
- Relax, show confidence and interest
- Maintain eye contact
- Confident hand shake
- Your interviewer is just another human

Robert Pertusati, Sr. Associate Dean and Director of Recruitment, Undergraduate Admissions, Stony Brook University

PROJECT SUMMER:

Building Blocks for a Successful College Application

By Robert Pertusati, Sr. Associate Dean, Director of Recruitment,
Undergraduate Admissions, Stony Brook University

If you're planning to apply to college in the next several years, you're likely to face increasing competition as the number of applicants is expected to continue to increase. That means an impressive college application is critical during the admissions process.

Much like developing an eye-catching employment resume, you must set yourself apart by carefully packaging your talents and accomplishments to catch the attention of savvy college admission officers who review and render decisions on thousands of applications.

While academic credentials and college entrance exams continue to play important roles in determining "fit" between student and college, there is increased attention paid to those unique activities you involve yourself in beyond the classroom. That includes your summer choices.

If you're eager to step away from an academic setting, you will find many opportunities to enhance your applications and provide you with life-long learning. These include volunteerism and community service.

Colleges today are placing great emphasis on how students give back to their communities. Not only does this demonstrate commitment to a cause and concern with helping others, but it also implies that students will continue to be active participants in their new college campus communities.

In reviewing thousands of college applications each year and in interviewing hundreds of prospective students, I often learn of so many incredible examples of how students support their communities. These include: participating in hurricane relief efforts at the site of the disaster, staffing food shelters, participating in literacy programs for both children and adults, as well as playing leadership roles in local houses of worship.

Many other students serve as mentors to younger children in numerous community-based programs. Volunteerism in community service speaks to your character, leadership and integrity – all key elements of successful college-bound students.

You can also choose to demonstrate your readiness for college by taking advantage of academic opportunities, which include enrolling in classes and participating in summer research programs on college campuses.

Not only does this provide access to intellectually stimulating experiences, but it also engages you in culturally rich exchanges with college students and faculty. Earning college credit during the sum-

mer may be applied to your academic record at institutions across the nation and demonstrate your interest and ability to master challenges.

Research programs encourage you to actively participate in the learning process by asking questions such as "why" and "under what circumstances does this hold true" as you test the accuracy and validity of information in which they are presented.

During college planning presentations, I regularly ask high school students if they accept or question information that teachers present them in class. Their responses are generally mixed, however, I encourage them to question that information. Learning should be active, not passive.

Many students seek opportunities to study abroad in countries across the globe. Not only does this provide insight into other cultures, but also allows you to put to good use your language skills acquired in high school foreign language classes. These experiences are both academically enriching and a great deal of fun. Group tours are the most popular as they are well organized and structured. In many cases, you may take formal classes in academic institutions within these countries, or simply participate in cultural experiences that will expand your intellectual curiosities.

Now that you have availed yourself of these dynamic opportunities, what's next? It is important that you be prepared to discuss these experiences with admissions officers during college interviews.

We enjoy being engaged in conversations with you and want you to share with us your passions – what makes you unique. Tell us what you've learned from these summer experiences and how they have impacted you.

Very often your college essay will be another vehicle through which you can describe to us the depth and impact of your summer journey. Be creative, be direct, be sincere! Don't tell us what you think we want to hear, but rather what it is you truly have to say. After all, we are "people people" not the "gate keepers" we are often accused of being. We enjoy learning of your journeys both in and beyond the classroom and are sincerely committed to helping you find the right "fit" in the college admissions process. Seek out those opportunities that match your interests and goals and you will find that the key to your college success begins with self-discovery and active participation. Enjoy the journey!



Save the Date!

**NCA
Spring College EXPO**

Tuesday, April 17, 2018

**Hofstra University
Mack Sports Complex**



Learn And Enjoy[®]



GOTOCOLLEGEFAIRS.com

Streamlining the College Fair Circuit

Students!

Register online today at www.gotocollegefairs.com to attend the college fairs

Why should I pre-register?

Maximize your time at the fair!

Provide your information one time through our simple, online registration page instead of dozens of times on prospect cards at each college table.

Ensure your personal data is accurately and securely shared with colleges and universities of your choosing.

- Increase face-to-face time with admissions Officers. Spend time learning more about their schools.

How does online registration help me?

Registering for a college fair through our simple, online registration page allows you to easily input your personal information, elaborate on your special interests, extracurricular activities, and unique accomplishments.

Bring this barcode with you to the fair and start visiting college and university tables.

College representatives will have a barcode scanner to securely capture the registration information you provided online, saving you *both* a lot of time and effort.

Register today!

Two days prior to the fair, you will receive a reminder email with your barcode attached.

- ◆ Stop in the school computer lab or register on a computer at home
- ◆ Registration is web-based, so you can register from any computer, anytime



How does this work?

- Students access www.gotocollegefairs.com website
- Click on the "Student Register Now" button
- Select the state and choose the fair to attend
- Complete the registration form (you may decide to complete only mandatory questions)
- Check the "terms and conditions box" and submit the form
- The barcode is displayed – they print the barcode and they're done!

Already registered for a previous event?

*Use your current username and password to add another fair.
No need to create a new registration*

New Feature

Students register online at www.gotocollegefairs.com

New York State Scholarships

New York State Excelsior Scholarship

The Excelsior Scholarship covers full tuition for students attending SUNY and CUNY colleges. Up to \$5,500 minus amounts received for TAP, Pell or other awards. A credit from the SUNY/CUNY school covers the difference. For Fall 2017, eligible families include those who earn up to \$100,000. Recipients agree to live in NYS for the number of years equal to awards received. Students must take 30 credits per year and maintain good academic standing.

Enhanced Tuition Awards

Enhanced tuition Awards are for New York students attending private not-for-profit colleges in NY State. Up to \$6,000 is awarded through a combination of TAP, Enhance Tuitions Award and a match from the private college. Recipients agree to live in NYS for the number of years equal to awards received.

Visit www.hesc.ny.gov/faprograms for more information.

Notes

Notes



Brian, B.F.A., Class of 2017

Questioning the “fiction” in science fiction.

95.6% of NYIT graduates are employed or
in grad school within 6 months of graduation.
If you like those odds, stop by our booth.

It’s the one draped in blue and gold.



New York Institute
of Technology

THE FUTURE IS OURS™

nyit.edu

**You can do
anything.**


**Achieve
everything
you've ever
wanted.**

Be Ready.

OPEN HOUSE

SJC Long Island
Sunday, October 29
10 a.m.

To RSVP, visit
sjcny.edu/liopenhouse
631.240.4454

**St. Joseph's
College**
NEW YORK 



Ready. Set. Joe's

LONG ISLAND • BROOKLYN • ONLINE